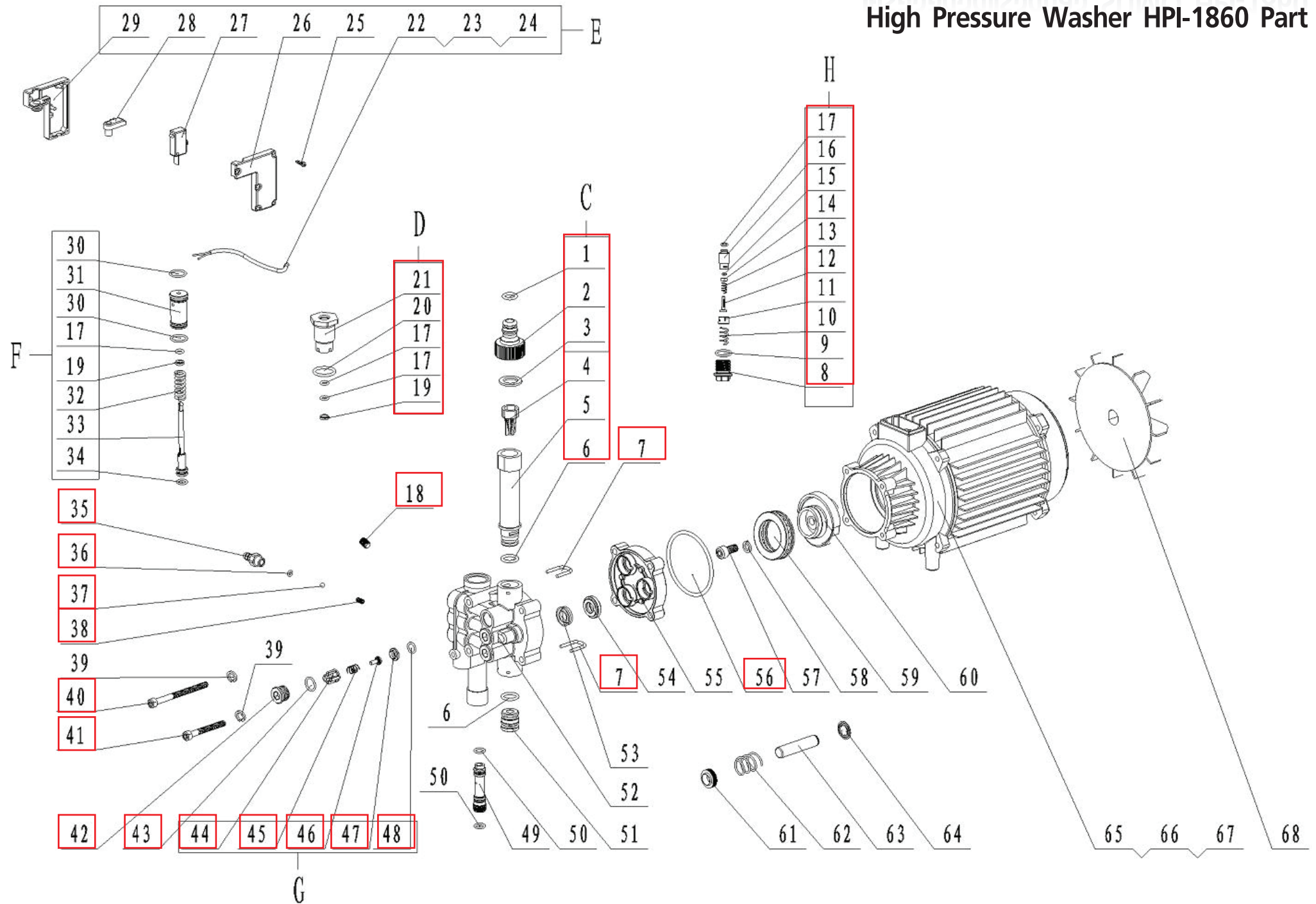


เครื่องอัดฉีดแรงดันสูง SUMO HPI-1860

High Pressure Washer HPI-1860 Part





เครื่องอัดฉีดแรงดันสูง SUMO HPI-1860

High Pressure Washer HPI-1860 Part

REF	DESCRIPTION	ราคา	QTY	REF	DESCRIPTION	ราคา	QTY
1	O-RING, 12.5×2.65	10.-	1	31	PROTECTOR OF SLIDE-VALVE		1
2	WATER INLET JOINT	30.-	1	32	SPRING Φ 1.8× Φ 9.8×36		1
3	FOURSQUARE SHIM	10.-	1	33	SLIDE-VALVE		1
4	FILTER NET	10.-	1	34	O-RING 8.75×1.8		1
5	WATER INLET CONNECTOR	20.-	1	35	SUCTION CONNECTOR	60.-	1
6	O-RING, 14×2.65	10.-	2	36	O-RING 4×1.5	10.-	1
7	U-PIN	10.-	2	37	SUCTION STEEL BALL, Φ 4.763	10.-	1
8	KEEP PRESSURE SCREW, M 16×1	10.-	1	38	SUCTION SPRING, Φ 0.3×4.5×8	10.-	1
9	O-RING 12.5×1.8	10.-	1	39	SPRING SHIM, Φ 6		4
10	SPRING Φ 0.4× Φ 9.5×15	10.-	1	40	INTERNAL HEXAGONAL BOLT, M6×75	15.-	2
11	VALVE COVER	10.-	1	41	INTERNAL HEXAGONAL BOLT, M6×50	15.-	2
12	VALVE HANDLE	10.-	1	42	SCREW OF IN/OUT VALVE, M6×1.5	30.-	6
13	SPRING Φ 0.95× Φ 5.05×12	10.-	1	43	O-RING, 13.7X1.8	10.-	6
14	PRESSURE RING	10.-	1	44	BODY OF IN/OUT VALVE	10.-	6
15	O-RING 2.5×1.8	10.-	1	45	SPRING OF IN/OUT VALVE, Φ 0.4×7.3×11	10.-	6
16	VALVE BOBY	10.-	1	46	CORE OF IN/OUT VALVE	10.-	6
17	O-RING 4.87×1.8	10.-	4	47	BASE OF IN/OUT VALVE	10.-	6
18	BLOCK CHAPIER, M5	10.-	2	48	O-RING, 10.6X1.8	10.-	6
19	PRESSURE RING	10.-	2	49	SUCTION NOZZLE		1
20	O-RING, 19×2.65	10.-	1	50	O-RING, 8.75X1.8		2
21	END COVER, M22×1.5	40.-	1	51	BLOCK OF WATER INLET		1
22	STOP SYSTEM CABLE, 2×1.5mm ² ×340mm		1	52	PUMP HEAD		1
23	INSERTS SPRING 6.3		3	53	Y-RING, Φ 12×20×5.3		3
24	PROTECTOR OF INSERTS SPRING 6.3		3	54	ORIENTED COVER		3
25	TAPPING SCREW, ST3×12		5	55	INTERMEDIATE BODY		1
26	LID OF MICROSWITCH BOX		1	56	O-RING, 64X2.2	10.-	2
27	MICROSWITCH		1	57	INTERNAL HEXAGONAL BOLT, M8×16		1
28	PUSH ARM		1	58	SPRING SHIM, Φ 8		1
29	MICROSWITCH BOX		1	59	THRUST FORCE BALL BEARING, 51107		1
30	O-RING 15×1.8		2	60	BEARING HOUSING, 8°		1
61	SKELETON RING, Φ 12×20×5/7		3	65	MOTOR		1
62	PLUNGER SPRING, Φ 1.6×18.2×28		3	66	EARTHING SCREW, M4×6		1
63	PLUNGER, Φ 12×53		3	67	EARTHING SHIM, Φ 4		1
64	PLUNGER FOLLOWER		3	68	FAN		1
C	WATER INLET JOINT MODULE		1	F	SPILOVER VALVE MODULE		1
D	END COVER MODULE		1	G	IN/OUT VALVE MODULE		6
E	AU-STOP SWITCH MODULE		1	H	PRESSURE MAINTAINING VALVE MODULE		1