



CG-30

**STRAIGHT
LINE SERIES**



Chafer

export@gazet.com
/ 067071 • FAX: 0086-574-8007127



SUMO[®]
INDUSTRIAL

เครื่องตัดแก๊สตามราง
Oxy-Fuel Cutter

CG-30



CG-30 Chafer

Economic Portable Cutting Machine

PART 1 Unique mechanism

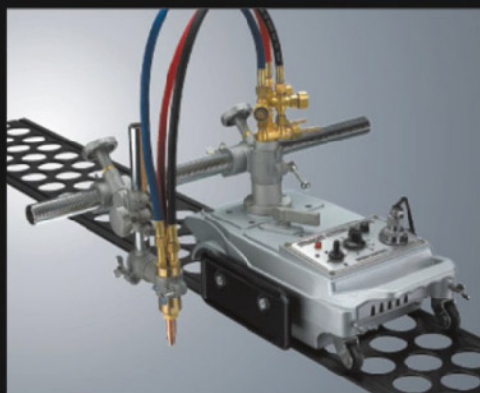
The machine is a very economic portable cutting machine by simple but durable structure. The machine can be installed with multiple torches for more choice. It applies for all types of straight line, circle, and bevel cutting by oxy-fuel flame (Acetylene or Propane) tips.

Features & benefits

Compact structure- Strong and compact main body made of Al-alloy

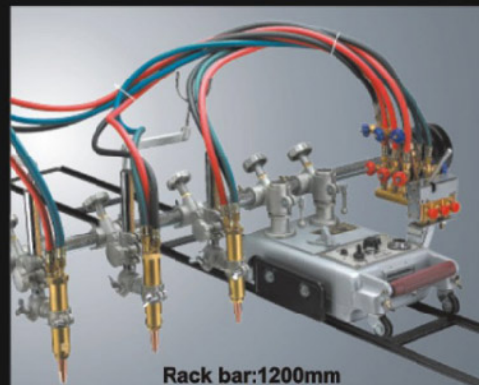
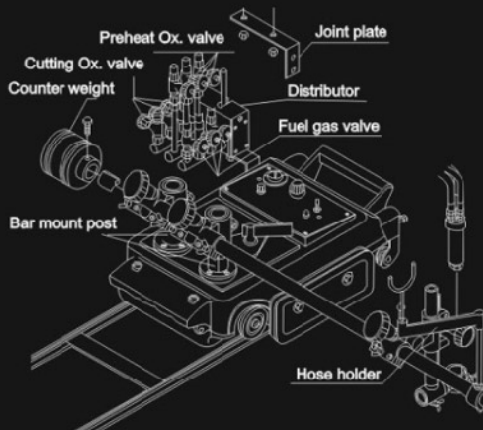
Easy handling - Silicon-controllable speed regulation; One touch snap valve on pipeline unit for quick gas control.

Circle cutting- Adjustable radius bar for circle cutting .

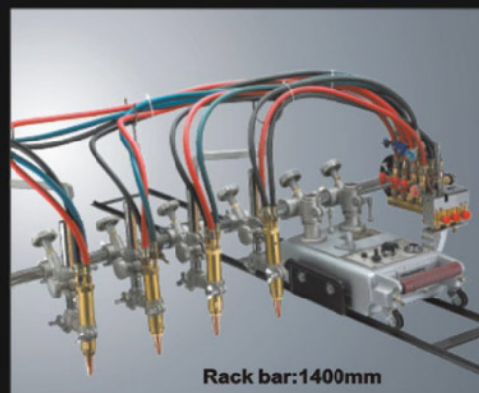


Chafer III/IV/V adopt the 2 mount posts structure to secure the rack bar. The hose holder on rack bar avoiding the long hoses twisting or being tangled. The distributor is placed at side for balancing purpose.

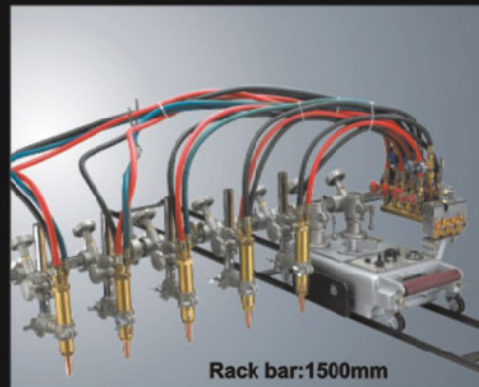
(Part of Chafer III shown below)



Rack bar:1200mm



Rack bar:1400mm



Rack bar:1500mm

Standard configuration

CG-30 (Chafer) • CG-30II (ChaferII)

Model No.	Overall dimension(mm)	Cutting thickness (mm)	Cutting speed(mm/min)	Cutting Circle (ϕ mm)	Torch number	Weight (kg)
Chafer	470×230×240	6~100	50~750	200~2,000	1	16
Chafer II	470×230×240	6~100	50~750	200~2,000	2	21

Multi-torch Chafer Economic Portable Cutting Machine

Model No.	Overall dimension(mm)	Cutting thickness (mm)	Cutting speed(mm/min)	Cutting width (mm)	Torch number	Weight (kg)
Chafer III	470×230×240	6~50mm	50~750	70~1,000	3	35
Chafer IV	470×230×240	6~50mm	50~750	70~1,100	4	40
Chafer V	470×230×240	6~50mm	50~750	70~1,300	5	50



Economic Portable Cutting Machine

PART 2 Cutting torch unit or W/Torch floating system

GC-30-1F For Square or V-Bevel Cutting:
Single torch unit equipped with a plate rider
having floating function to maintain distance
between tip and workpiece. Standard pipe
arm length: 600mm; Vertical axis steel pipe:
Vertical adjustment up to 130mm.

GC-30-2F For Square, V, Y, or X Bevel Cutting
Two torch model equipped with two plate
riders having floating function to maintain
distance between tip and workpiece.
Standard pipe arm length: 600mm
Balance weight attached.
Bevel and parallel cutting possible.

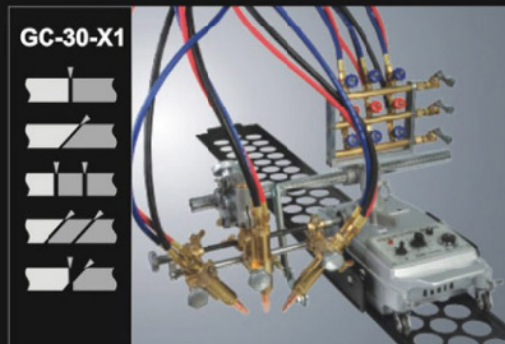
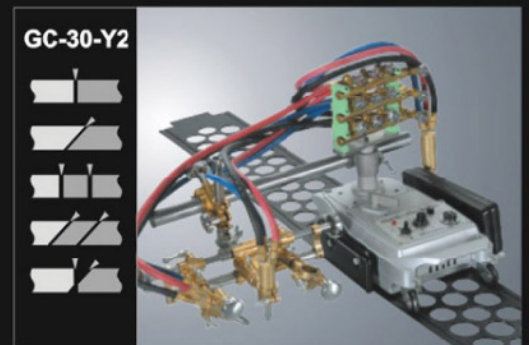
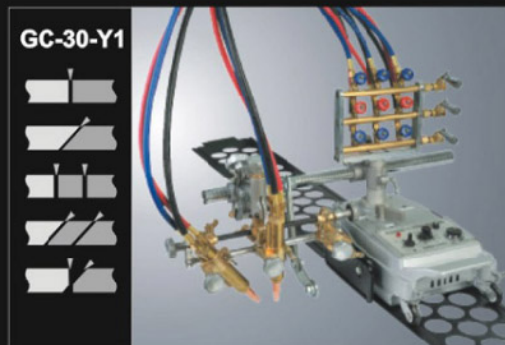
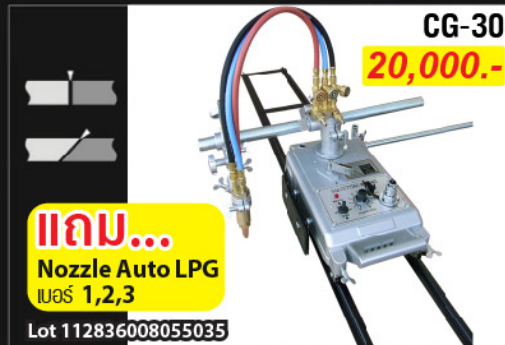
GC-30-Y1 (Y-Cutting Unit) For
Square, V, Y, or X-Bevel Cutting:
A combination unit of plate rider having
floating function and 2 torches of V bevel
block. Clean and sharp bevel V, Y and X
cutting is ensured.

GC-30-Y2 (W/o floating function) available

GC-30-X1 / GC-30-X2 (X-Cutting Unit) For
Square, V, Y, X or K-Bevel Cutting:
Combination unit of plate rider having
floating function and 3 torches of X bevel
block for precision X and K bevel cutting.

GC-30-X3 (W/o floating function) available

GC-30-P: Uses expandable torch holder
for use with most plasma systems using
remote pendant supplied by the plasma
Manufacturer.



ชุดหัวตัดแก๊ส CG-30

Cutting Torch Set



1 Torch
ความยาว 920 mm.

4,200.-

Lot 112836008055040



2 Torch
ความยาว 1,050 mm.
และ 870 mm.

8,500.-

Lot 112836008055039

รางรถไฟ

Rail for oxy-fuel Cutter
ขนาด 1,800x210 mm.

2,000.-





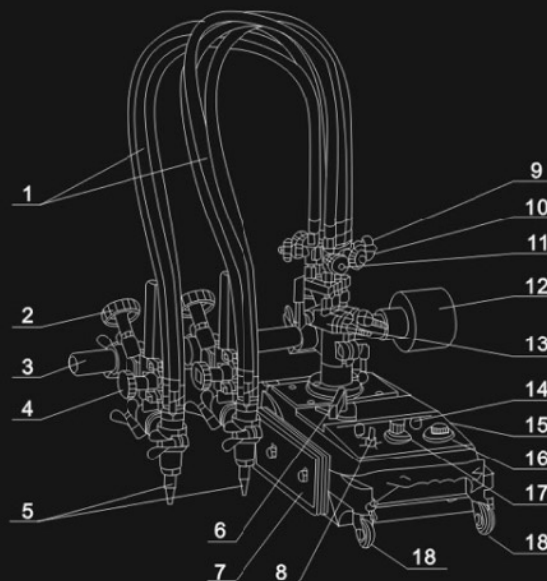
CG-30 Chafer

Economic Portable Cutting Machine

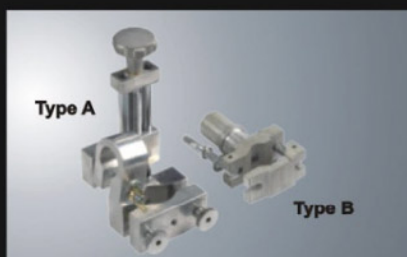
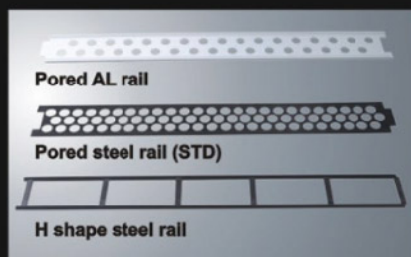
PART 3 Unique mechanism

Standard configuration

- | | |
|-----------------------------|---|
| 1.Hose | 10.Preheat valve |
| 2.Cross feed hand wheel | 11.Cutting valve |
| 3.Cross rack bar | 12.Counter weight (All but single torch type) |
| 4.Lift hand wheel | 13.Distributor |
| 5.Tip | 14.Fuse |
| 6.Clutch handle | 15.Main unit |
| 7.Heat shield plate | 16.Power socket |
| 8.Forward / Backward switch | 17.Speed knob |
| 9.Fuel gas valve | 18.Idle wheel |



PART 4 Plate track and accessories

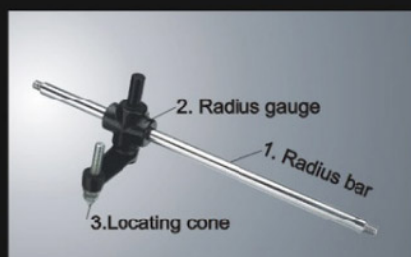


Standard configuration for all models

- 1pc 1.8m pored rails or 2pcs 1.8m H shape rails
- 3pcs tips (Acetylene or Propane)
- 1 set circular cutting attachment

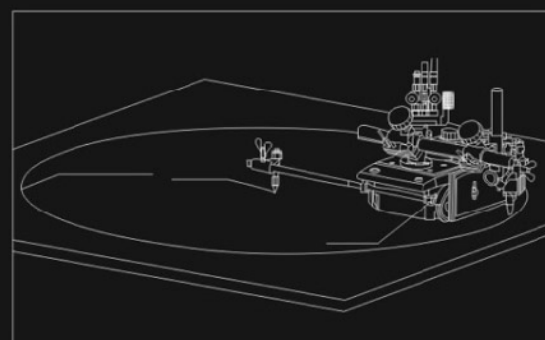
Plasma torch holder unit for Chafer Q

The machine is fitted with plasma torch holder for plasma cutting .The cutting speed is up to 50-4500mm. the plasma cutting is ideal for ferrous or non-ferrous such as Al plate, S.S plate cutting

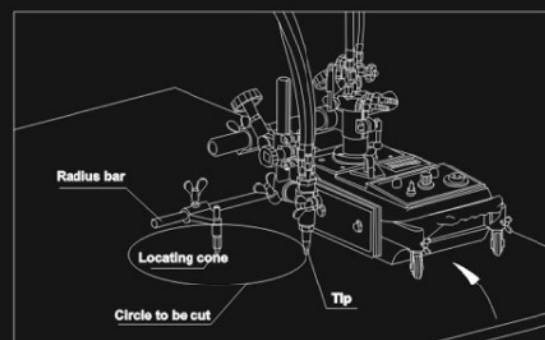


Circle/Arc Cutting attachment

Circle/Arc Cutting (with radius bar unit)



Small circle cutting



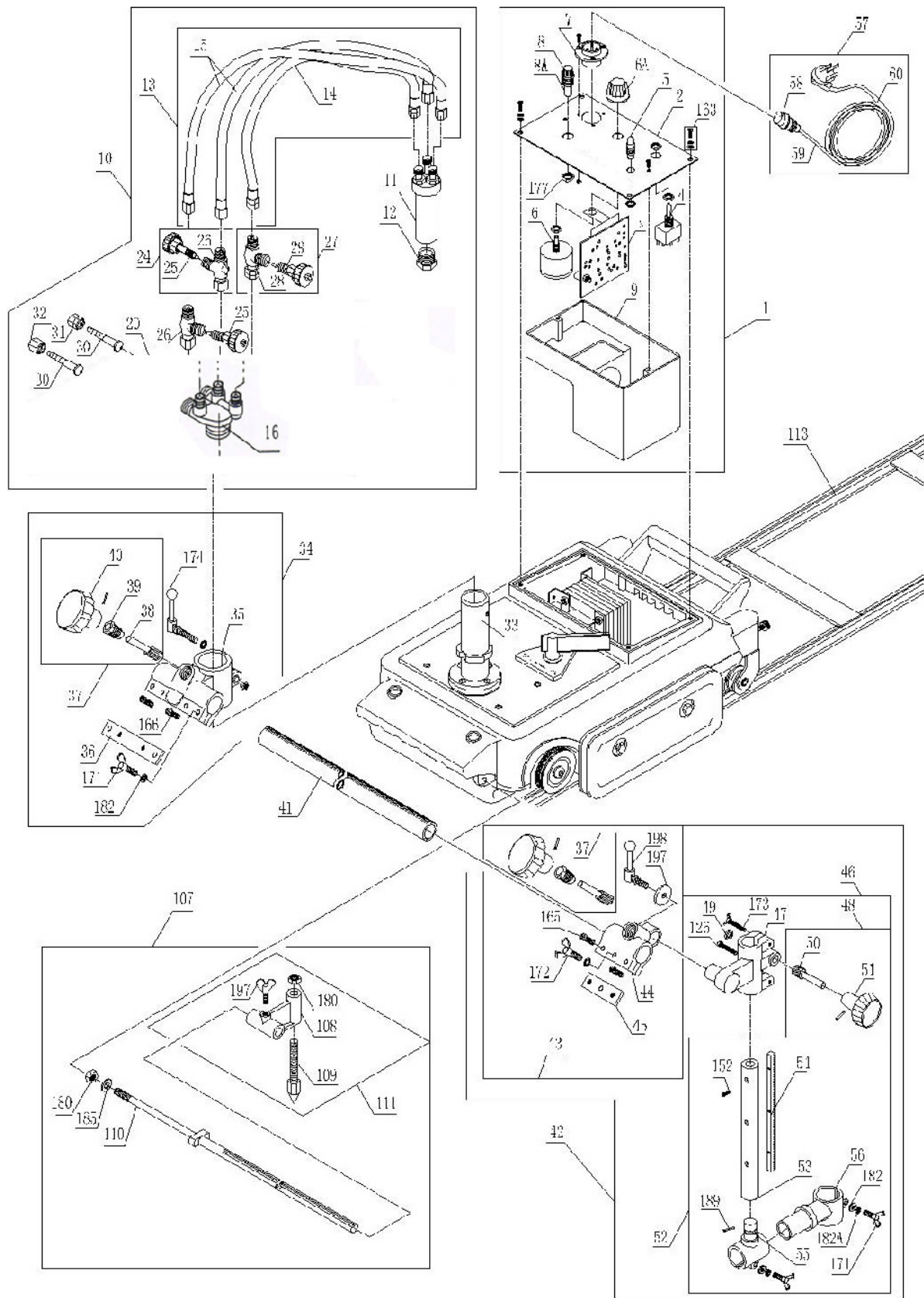
Large circle cutting

Note: Make a center hole (slope 60°) at the circle center to fix the circle cutting attachment for both small or large circle cutting.

- 1.Insert the radius part 1 into the holes at the front of machine and tighten with M10 Nut.
- 2.Insert the radius gauge Part 2 onto to the Radius bar Part 1,adjust the gauge location so that the locating cone Part 3 at the circle center hole,then locking the radius gauge with wing bolt. Adjust the fixing screw to lift the inboard drive wheel 1-2mm above the steel plate (3/64-5/64") and tighten the screw.
- 3.Release the Idle wheel by loosening the locking wing bolts so that the wheels rotate freely.
- 4.Install the torch vertically and make the tip align with the marking line.release the clutch and push the machine to check if the machine can go round the marking line
- 5.Be caution that the hose or cords might stumble while cutting. So pls arrange the hoses and power cords well before operation to make sure they won't cause any trouble.

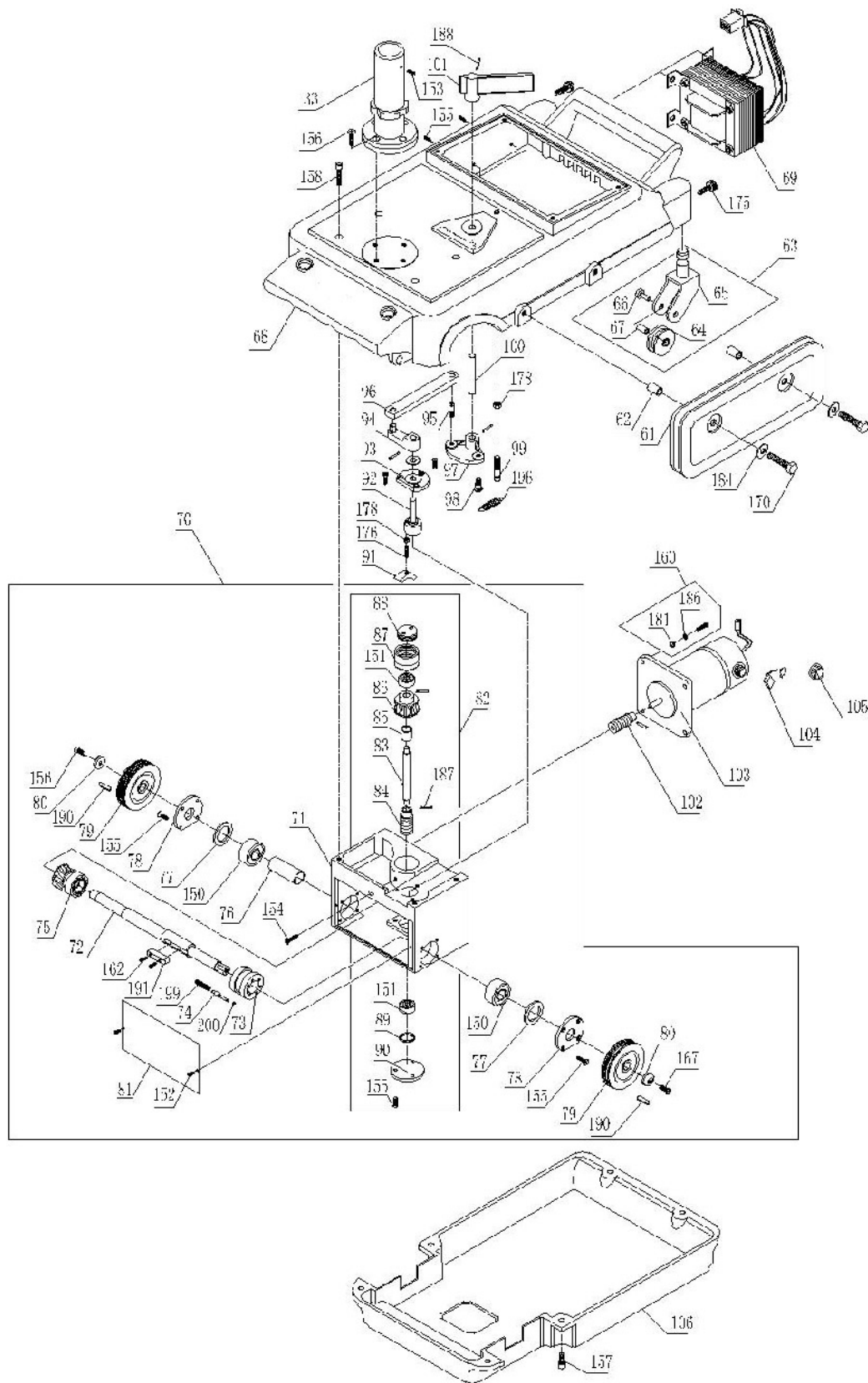
CG-30 Chafer

gas cutting machine (1)



CG-30 Chafer

gas cutting machine (2)



CG-30 Chafer

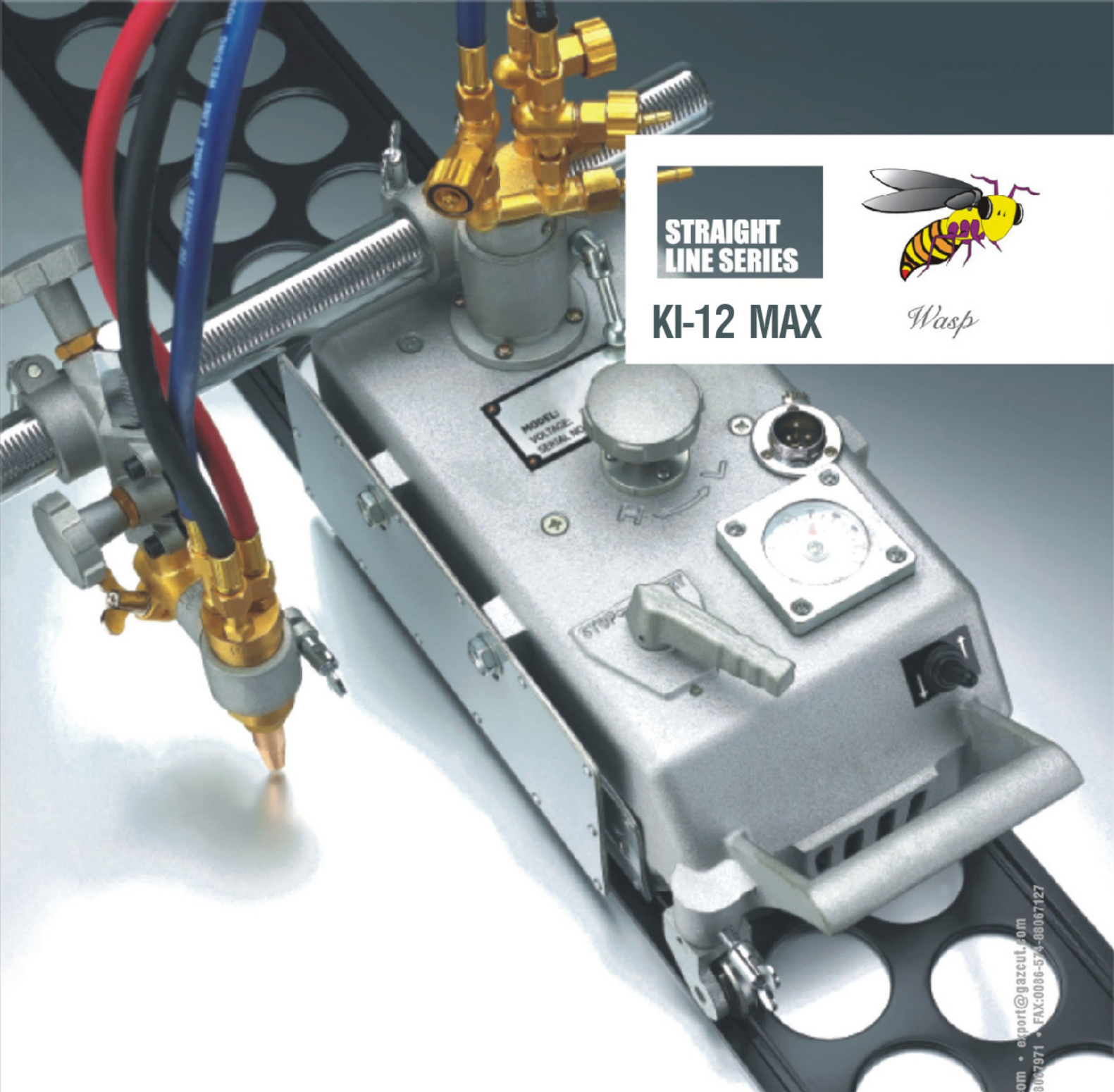
Model GC-30 Standard parts list

Art. No.	Part Name	Price	Art. No.	Part Name	Price
1100-001	circuit control assembly		1100-062	Sleeve	
1100-002	panel		1100-063	Idle wheel unit (concave)	
1100-003	Circuit board		1100-063a	Idle wheel unit (convex)	
1100-004	Forward/Back switch		1100-064	Wheel	
1100-005	Power lamp		1100-065	Wheel holder	
1100-006	Condenser		1100-066	Wheel Shaft	
1100-006A	Condenser knob		1100-067	Sleeve for wheel shaft	
1100-007	Power socket		1100-068	Upper body case	
1100-008	Fuse holder		1100-069	Transformer	
1100-008A	Fuse		1100-070	Gear box assembly	
1100-009	Electric case		1100-071	Speed r	
1100-010	Gas system		1100-072	Drive wheel shaft	
1100-011	Torch		1100-073	Clutch	
1100-012	Torch Nut for fixing tip		1100-074	Clutch pin	
1100-013	Hose assembly		1100-075	Worm wheel	
1100-014	Gas hose		1100-076	Worm wheel retainer	
1100-015	Oxygen hose		1100-077	Collar	
1100-016	Gas distributor		1100-078	Bearing retainer	
1100-024	Oxygen valve		1100-079	Drive wheel (concave)	
1100-025	Oxygen valve needle		1100-079A	Drive Wheel (convex)	
1100-026	Oxygen valve body		1100-080	Washer	
1100-027	Acetylene valve		1100-081	Plate	
1100-028	Acetylene valve body		1100-082	Drive worm unit	
1100-029	Acetylene valve needle		1100-083	Little Shaft	
1100-030	Hose connector		1100-084	Clutch worm	
1100-031	Nut for gas		1100-085	Worm locator	
1100-032	Nut for oxygen		1100-086	Motor worm	
1100-033	Bracket		1100-087	Bearing bracket	
1100-034	Cross feed assembly		1100-088	Bearing retainer	
1100-035	Cross feed holder		1100-089	Bearing collar	
1100-036	Long fixing Metal block		1100-090	Bearing retainer	
1100-037	Cross feed pinion unit		1100-091	Rack	
1100-038	Pinion		1100-092	Shaft	
1100-039	Pinion metal		1100-093	Shaft holder	
1100-040	Handle		1100-094	Rotator	
1100-041	Pipe arm		1100-095	Screw	
1100-042	Torch lifter assembly	2250.-	1100-096	Fixing plate	
1100-043	Cross feed seat assembly		1100-097	Speeding adjusting bracket	
1100-044	Cross feed seat		1100-098	Screw	
1100-045	Short fixing metal block		1100-099	Screw	
1100-046	Torch lifter unit		1100-100	Clutch handle shaft	
1100-047	Sliding bar holder		1100-101	Clutch handle	
1100-048	Pinion unit		1100-102	Motor shaft	
1100-049	Washer		1100-103	DC motor	
1100-050	Pinion		1100-104	Carbon brush	
1100-051	Handle		1100-105	Carbon cap	
1100-052	Torch Holder unit		1100-106	Lower body case	

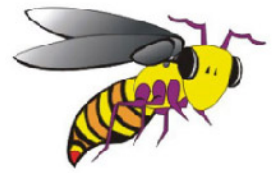
CG-30 Chafer

Standard parts for Model GC-30 Standard

Art. No.	Part Name	Price	Art. No.	Part Name	Price
1100-053	Up/Down sliding bar		1100-107	Circle cutting attachment	
1100-054	Rack		1100-108	Locator body	
1100-055	Holder joint		1100-109	Locator shaft	
1100-056	Torch holder		1100-110	Radius bar	
1100-057	Cabtyre cord assembly		1100-111	Locator	
1100-058	Metal plug		1100-112	Rail 1.8m convex slot (H shape)-2pcs	
1100-059	Cabtyre cord		1100-112A	Rail 1.8m concave slot (Pored)-1pc	
1100-060	Rubber Plug		1100-113B	Rail 1.2m concave slot (Optional)	
1100-061	Heat-proof shield				
1100-150	Bearing 6206		1100-176	Grub screw M5*20	
1100-151	Bearing 626		1100-177	Hexagonal bolt M3	
1100-152	Countersunk head screw M3*6		1100-178	Hexagonal bolt M5	
1100-153	Semi-round head screw M4*8		1100-179	Hexagonal bolt M8	
1100-154	Countersunk head screw M4*15		1100-180	Hexagonal bolt M10	
1100-155	Countersunk head screw M4*8		1100-181	Collar Ø4	
1100-156	Countersunk head screw M5*16		1100-182	Collar Ø6	
1100-157	hexagonal socket screwM5*12		1100-183	Collar	
1100-158	hexagonal socket screwM5*20		1100-184	Collar Ø8	
1100-159	Countersunk head screw M3*8		1100-185	Collar Ø10	
1100-160	Semi-round head screw M4*12		1100-186	Spring washer Ø4	
1100-161	Semi-round head screw M6*15		1100-187	Elastic straight Pin Ø2.5*12	
1100-162	Socket cap screw M3*6		1100-188	Elastic straight Pin Ø2.5*18	
1100-163	Semi-round head screw M4*8		1100-189	Elastic straight pin Ø4*22	
1100-164	Socket cap Screw M4*16		1100-190	Flat key 4*4*8	
1100-165	Socket cap screw M6*10		1100-191	Flat key 6*4*25	
1100-166	Socket cap screw M6*15		1100-192	O ring	
1100-167	Countersunk head screw M5*16		1100-193	Bowl shape ring	
1100-168	Socket cap screw		1100-194	Valve needle spring	
1100-169	hexagonal socket screwM6*20		1100-195	Spring	
1100-170	Hexagonal socket screwM8*30		1100-196	tension spring Ø10*28	
1100-171	Wing bolt M6*28		1100-197	Wing bolt M6*20	
1100-172	Wing bolt M6*28		1100-198	Buttonhead screw M8*15	
1100-173	Wing bolt M5*23		1100-199	Spring 4*20	
1100-174	Button head cap screw M8*30		1100-200	Circlip Ø2	
1100-175	Knurling screw M6*15				



**STRAIGHT
LINE SERIES**



KI-12 MAX

Wasp

com • export@gazcut.com
8067971 • FAX:0086-574-88067127



เครื่องตัดแก๊สตามราง
Oxy-Fuel Cutter

KI-12 MAX



KI-12 MAX

The machine reduction gear adopts unique double cone system and is durable for the application in rigid condition.

PART 1 Unique mechanism

Features & benefits

- ◆ Superior heat-proof for normal portable cutting machines
- ◆ Reliable speed control
- ◆ Readable speed with digital gauge display of speed
- ◆ Easily controllable clutch
- ◆ Application for linear, circular, bevel cutting
- ◆ Extendable line track
- ◆ Adjustable radius bar for circle cutting

Technic specification

Model	KC-12M wasp
Cutting Capacity:	5 to 100 mm
Bevels:	0° to 45°
Straight Cuts:	1.8 m and multiples
Circle Cutting (Diameter):	40 to 2650 mm
Cutting Speed:	80 to 800 mm/min (50HZ) 100 to 1000 mm/min (60HZ)
Torch:	Injector Type to suit Acetylene / LPG
Gas Connection (Fuel LH & Oxygen RH):	1/4" G; 9/16" etc.
Gross Weight:	11.5kg W/ 1 torch 16kg W/ 2 torches.
Dimensions W/o rail (mm):	440 × 205 × 215

Travelling carriage

Not affected by intense heat and fluctuating voltage, the maximum driving mechanism ensures steady travelling. Speed Control Mechanism of KC-12 MAX has adopted an exclusive Double Cone Stepless Speed control system (See the drawing), which functions with a condensor motor rotating at regular speed to prevent heat and voltage problems from occurring. No reduction gear is employed in the mechanism. Therefore, any knocking from backlash, noise or vibration does not take place. With entire use of heat-resisting grease, high temperature soldering and teflon wiring, heat protection is considered perfect and durable for long continuous operation. In addition, the condensor motor rotating at a constant low speed (1.500 r.p.m./50Hz) prolongs the service life of bearings and maintains the "maximum state" for a long period of time.

ชุดหัวตัดแก๊ส KI-12M

Cutting Torch Set
for KI-12M and KI-12MAX-3

1 Torch

ความยาว 920 mm.

4,500.-

Lot 112836008055038



2 Torch

ความยาว 1,050 mm.
และ 870 mm.

12,000.-

Lot 112836008055036



วาล์ว สำหรับ KI-12M



วาล์วออกซิเจน
Oxygen valve

500.-

Lot 112836008055040



วาล์วแก๊สเชื้อเพลิง
Fuel Gas valve

500.-

Lot 112836008055040

ชุดประกอบ สำหรับ KI-12M



Feed assembly

3,500.-

Lot 112836008055040

รางวงกลม Circle Rail

40-360 และ
1150-2400 mm.

10,000.-

Lot 112836008055041



บาร์ตัวยึดสำหรับ KI-12M



Bar holder

1,200.-

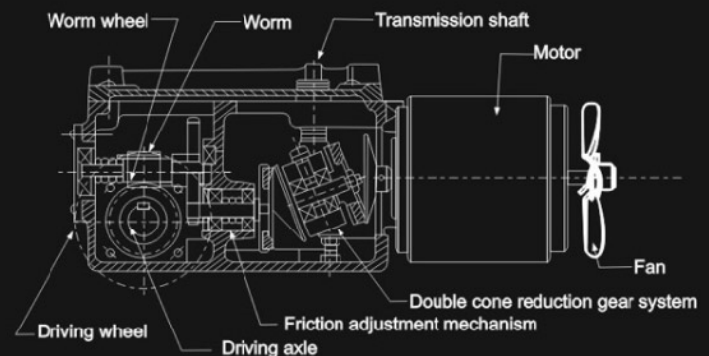
Lot 112836008055040

รางเจาะรู

ขนาด 170x1,800 mm.

3,800.-

Lot 112836008055034



KC-12M wasp standard configuration

	S-100 Acetylene Kit	S-100 LPG Kit	S-200 Acetylene Kit	S-200 LPG Kit
Order No.	KC12M100102	KC12M100106	KC12M100102	KC12M200106
Torch Number	1 torch	1 torch	2 torches	2 torches
Track	One 72" (1800mm) concave pored rail			
Tips model	ANME	PNME	ANME	PNME
Bevel shape	I,V	I,V	I,V,Y	I,V,Y
Power	AC42/110/220V			

KI-12 MAX



A max that surpassed the max...

PART 2 Cutting torch unit

S-100 For Square or V-Bevel:

Single torch unit equipped with a simple holder having no floating function.
Standard pipe arm length: 400 mm
Vertical adjustment up to 65mm

S-200 For square, V, Y or X-Bevel cutting:

Two torch model of S-100.
Standard pipe arm length: 600mm
Balance weight attached.
Bevel and parallel cutting possible.

SP-100 For Square or V-Bevel Cutting:

Single torch unit equipped with a plate rider having floating function to maintain distance between tip and workpiece. Standard pipe arm length: 400mm; Vertical axis steel pipe: Vertical adjustment up to 120mm

SP-200 For Square, V, Y, or X Bevel Cutting

Two torch model of SP-100 equipped with a plate rider having floating function to maintain distance between tip and workpiece. Standard pipe arm length: 600mm
Balance weight attached.
Bevel and parallel cutting possible.

SP-300 (Y-Cutting unit) For

Square, V, Y, or X-Bevel Cutting:

A combination unit of plate rider having floating function and 2 torches of V bevel block. Clean and sharp bevel V, Y and X cutting is ensured.

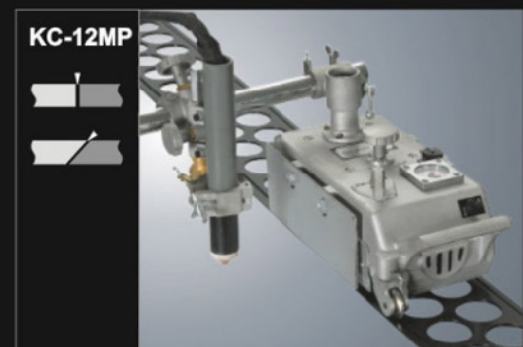
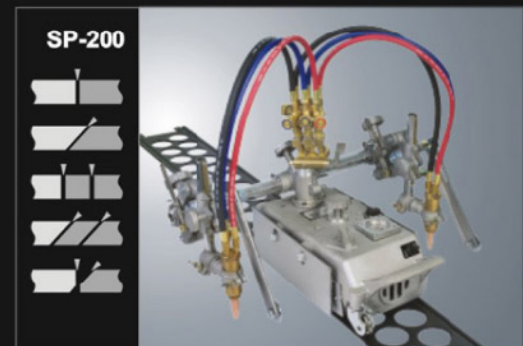
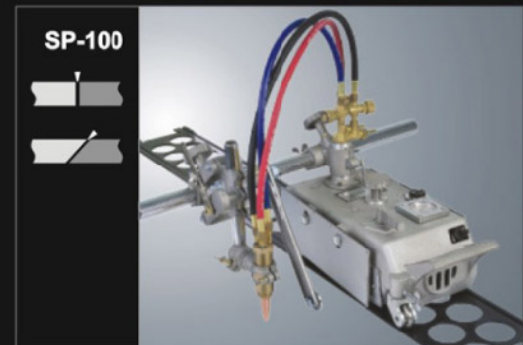
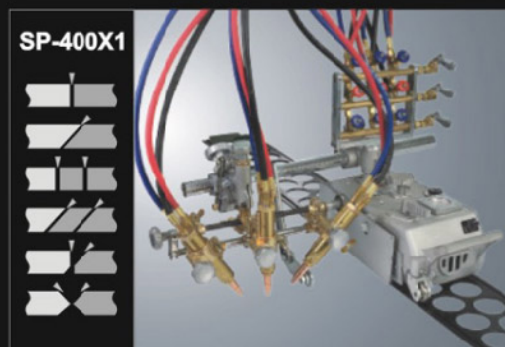
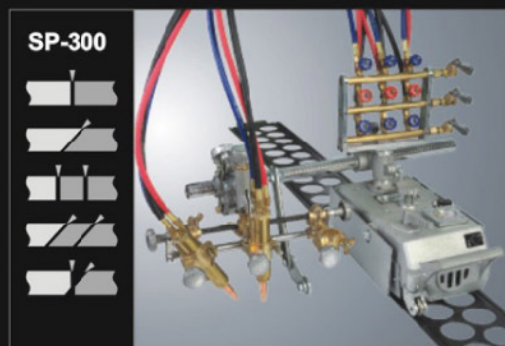
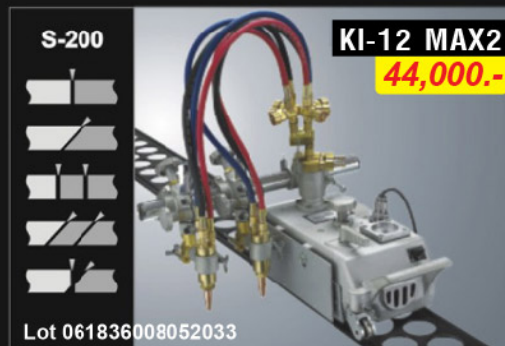
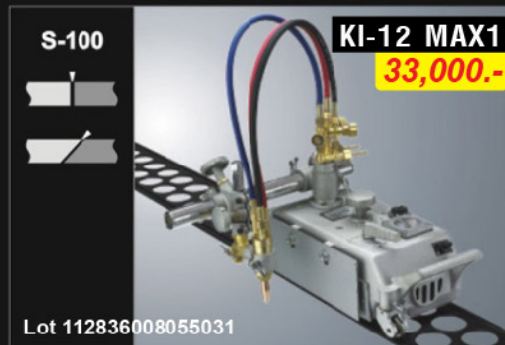
SP-400X1 (X-Cutting unit) For

Square, V, Y, X or K-Bevel Cutting:

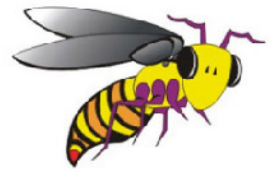
Combination unit of plate rider having floating function and 3 torches of X bevel block for precision X and K bevel cutting.

SP-400X2 (without floating function) available

KC-12MP: Uses expandable torch holder for use with most plasma systems; Using remote pendant supplied by the plasma manufacturer.

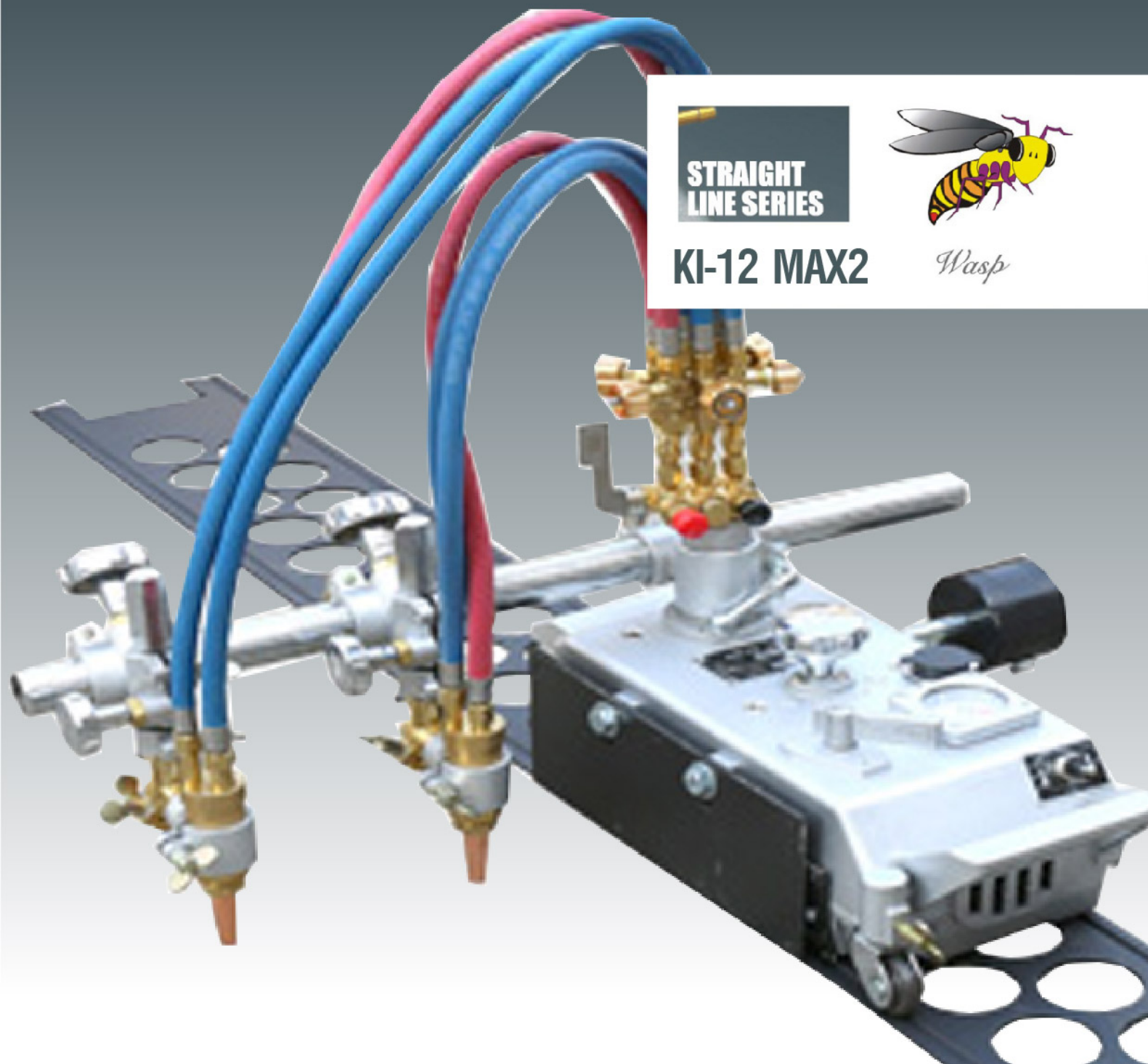


STRAIGHT
LINE SERIES



KI-12 MAX2

Wasp



SUMO[®]
INDUSTRIAL

เครื่องตัดแก๊สตามราง
Oxy-Fuel Cutter

KI-12 MAX2



KI-12 MAX

A max that surpassed the max...

PART 3 Configuration

Cross-feed knob

Torch lifting knob

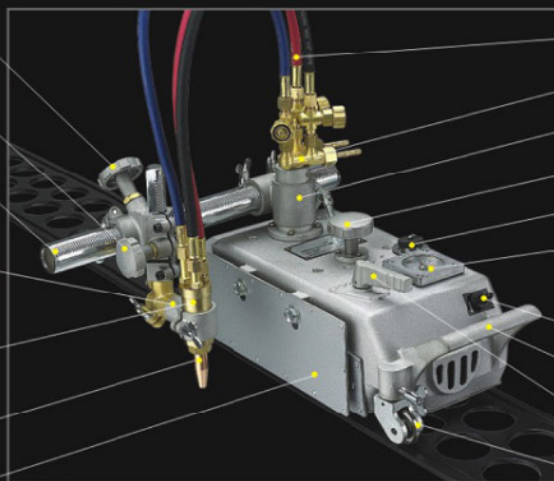
Cross slide rack bar

Torch holder assembly

Flame cutting torch

Oxy-fuel cutting tip

Heat shield plate



Hoses(distributor -torch)

Gas distributor

Racking bar holder

Speeding knob

Electric power plug

Speed dial movement

Forward/Reverse Switch

Carrying handle

Clutch lever

Guide wheel

PART 4 Plate track and accessories

Optional accessories

Straight rail:

Each track of 1.8m (72") long is extensible to the requirement.

Circle cutting attachment:

Recommended for cutting circles of large diameter: $\phi 50 \sim 2,400$ mm

Circle cutting rail:

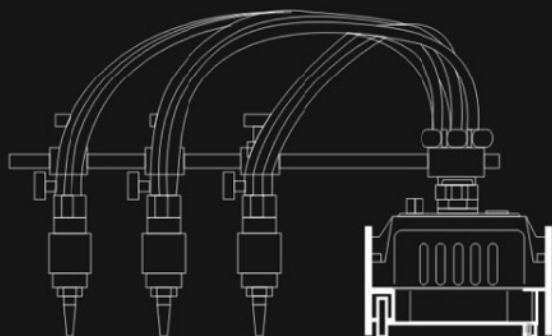
Recommended for cutting circles of comparatively large diameter.

Cutting Range: $\phi 40 \sim 360$ mm and $\phi 1,150 \sim 2,400$ mm

Multiple - torch option

*Pipe arm (Long type 1,000mm)

Parallel cutting of wide products can be made with multiple torches



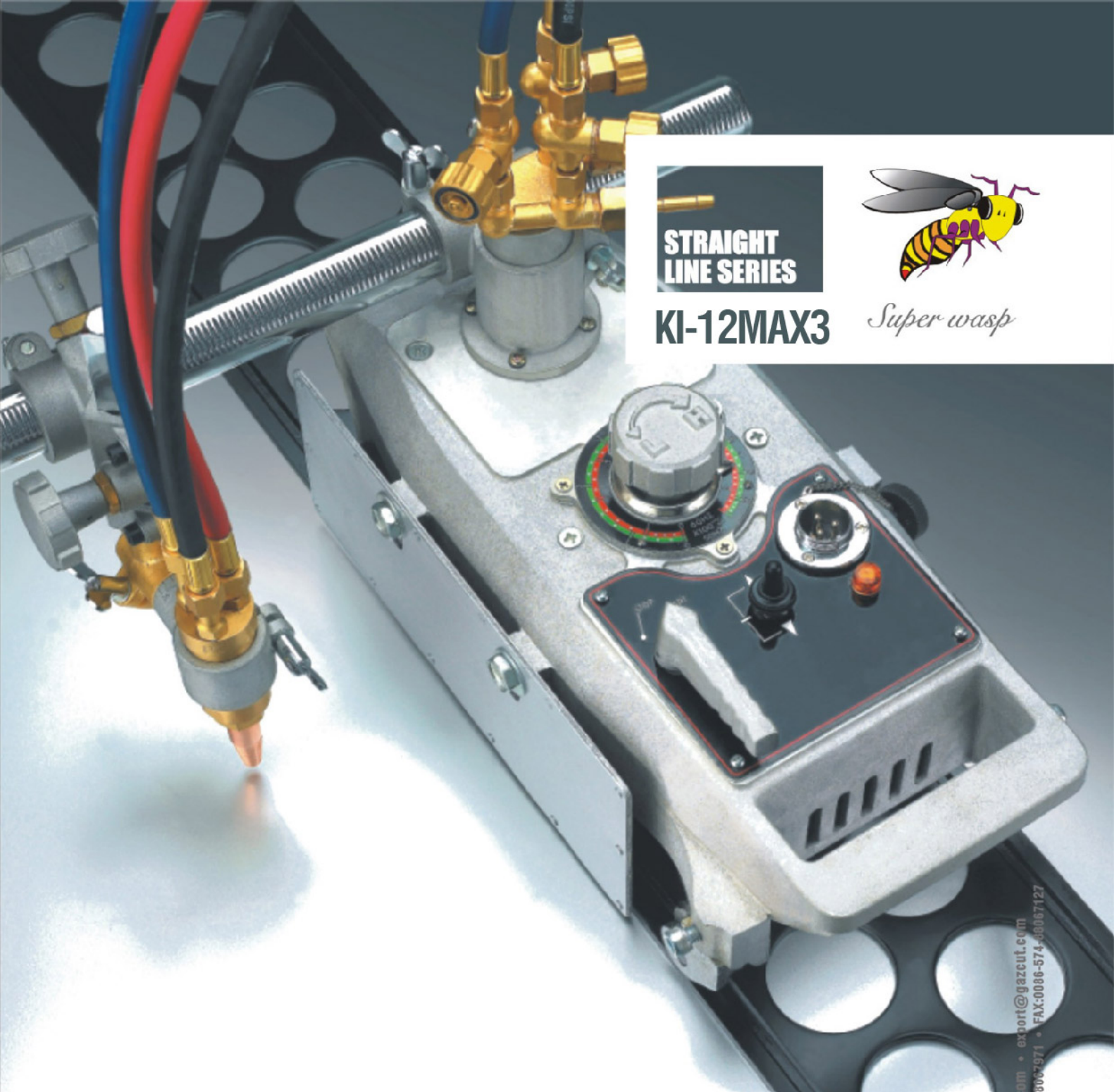
Long type arm for multiple-torch application



Circle cut w / radius rod



Circle cut w / circle rail



SUMO[®]
INDUSTRIAL

เครื่องตัดแก๊สตามราง
Oxy-Fuel Cutter

KI-12 MAX3

The machine reduction gear adopts unique double cone system and is durable for the application in rigid condition.



KI-12MAX3 เครื่องตัดแก๊สตามราง Oxy-Fuel Cutter

The machine reduction gear adopts unique double cone system and is durable for the application in rigid condition.

PART 1 Unique mechanism

The machine is a new generation, innovative machine with a body structure systematized for different types of oxy-fuel/plasma cutting and automatic welding work. There are three major parts to the system: The advanced motorized carriage, a cutting torch unit and the plate track and accessories. All serving as independent units, the customer can choose the system needed for his specific requirements.

Features & benefits

Unique drive system - Allows infinite speed range adjustment using constant speed motor.

Versatility and convertibility - All types of straight line, circle, and bevel cutting.

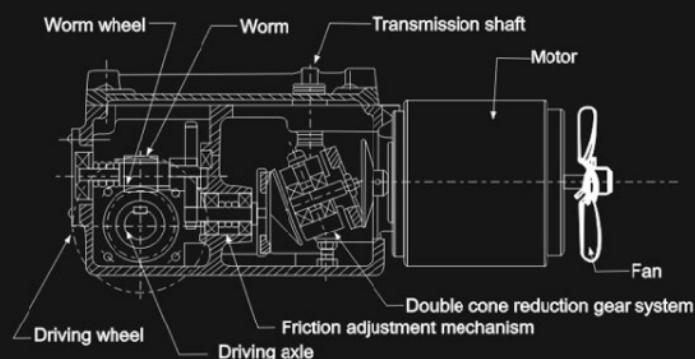
Quality cutting - Use Sumo style taper seat type oxy-fuel cutting tips and torch with uniquely accurate, unequaled performance in cutting clean, and sharp edges.

Circle cutting - Adjustable radius bar for circle cutting.

High speed mode - 240~2,400mm/min at 50 Hz and or 300~3,000mm/min (12"~118") at 60 Hz is available.

Travelling carriage

Not affected by intense heat and fluctuating voltage, the maximum driving mechanism ensures steady travelling. Speed Control Mechanism of KI-12MAX3 has adopted an exclusive double cone stepless speed control system (See the drawing), which functions with a condenser motor rotating at regular speed to prevent heat and voltage problems from occurring. No reduction gear is employed in the mechanism. Therefore, any knocking from backlash, noise or vibration does not take place. With entire use of heat-resisting grease, high temperature soldering and teflon wiring, heat protection is considered perfect and durable for long continuous operation. In addition, the condenser motor rotating at a constant low speed (1,500 r.p.m./50Hz) prolongs the service life of bearings and maintains the "maximum state" for a long period of time.



Technic specification

Model	KI-12MAX3	KI-12MAX3-P
Cutting capacity:	5-100 mm.	Depends on the plasma power
Bevels:	0°-45°	0°-45°
Straight cuts:	1.8 m. and multiples	1.8 m. and multiples
Circle cutting (Diameter):	40-2650 mm.	40-2650 mm.
Cutting speed:	80-800 mm./min (50Hz)	80-1600 mm./min (50Hz)
Torch:	Injector Type to suit Acetylene / LPG	Plasma torch
Gas Connection (Fuel LH & Oxygen RH):	1/4"G; 9/16" etc.	
Gross Weight:	1 torch : 11.5kg. 2 torch : 16kg.	
Dimension (Body):	440x205x215 mm.	440x205x215 mm.

KI-12MAX3 Super Wasp standard configuration

	S-100 Acetylene Kit	S-100 LPG Kit	S-200 Acetylene Kit	S-200 LPG Kit
Order No.	KI-12MAX3-100102	KI-12MAX3-100106	KI-12MAX3-200102	KI-12MAX3-200106
Torch Number	1 torch	1 torch	2 torches	2 torches
Track	One 72" (1800mm)			
Tips model	ANME	PNME	ANME	PNME
Bevel shape	I,V	I,V	I,V,Y	I,V,Y
Power	AC42/110/220V			



A super max that surpassed the max...

PART 2 Cutting torch unit

S-100 For Square or V-Bevel:
Single torch unit equipped with a simple holder having no floating function.
Standard pipe arm length: 400 mm
Vertical adjustment up to 65mm

S-200 For square, V, Y or X-Bevel cutting:
Two torch model of S-100.
Standard pipe arm length: 600mm
Balance weight attached. Bevel and parallel cutting possible.

SP-100 For Square or V-Bevel Cutting:
Single torch unit equipped with a plate rider having floating function to maintain distance between tip and workpiece. Standard pipe arm length: 400mm : Vertical axis steel pipe: Vertical adjustment up to 120mm

SP-200 For Square, V, Y, or X Bevel Cutting
Two torch model of SP-100 equipped with a plate rider having floating function to maintain distance between tip and workpiece. Standard pipe arm length: 600mm
Balance weight attached.
Bevel and parallel cutting possible.

SP-300 (Y-Cutting unit) For Square, V, Y, or X-Bevel Cutting:
A combination unit of plate rider having floating function and 2 torches of V bevel block. Clean and sharp bevel V, Y and X cutting is ensured.

SP-400X1 (X-Cutting unit) For Square, V, Y, X or K-Bevel Cutting:
Combination unit of plate rider having floating function and 3 torches of X bevel block for precision X and K bevel cutting.

SP-400X2 (without floating function) available

KC-12M3P: Uses expandable torch holder for use with most plasma systems using remote pendant supplied by the plasma Manufacturer.

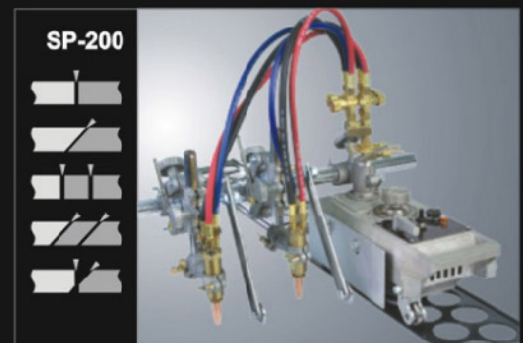
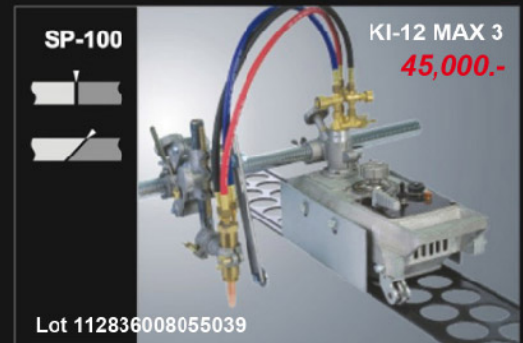
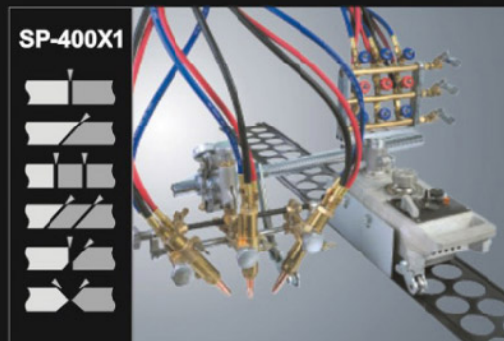
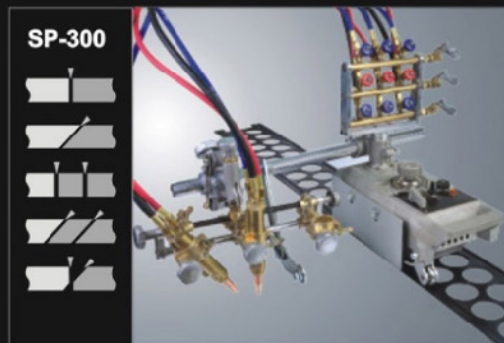
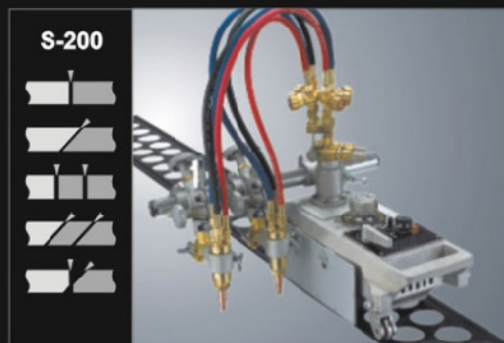
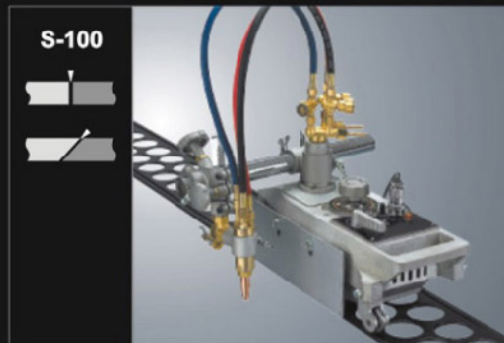
KC-12 MAX5

Portable Automatic Cut Length Measurement Machine - Automatic travel stop and gas shutoff at the end of preset cut distance.

Features :

- ◆ Equipped with solid state digital auto stop mechanism
- ◆ Equipped with solenoid gas control
- ◆ Efficient labor and gas saving

KC-12 MAX4 The type with manual stopper is also available.



เครื่องตัดแก๊สตามราง (พลาสติก)

ชุดหัวตัดแก๊ส KI-12 MAX3

Cutting Torch Set
for KI-12M and KI-12MAX-3

1 Torch
ความยาว 920 mm.
4,500.-
Lot 112836008055038

2 Torch
ความยาว 1,050 mm.
และ 870 mm.
12,000.-
Lot 112836008055036



KI-12MAX3 Super wasp

A super max that surpassed the max...

PART 4 Unique mechanism

Advance Form

Many cut-off spaces of the upper body makes observation of the wheel positions easier.

Strong Heat Proof Board

Use of ceramic fibres remarkably improves heat proof effect.

Sharply Designed Speed Dial

Light Clutch Handle

One of the important working elements that should be always reliable during operation . Nicely fitting to the operators hand.

Improvement of Workability in Circle Cutting

Lower plate part of the body is cut open widely, which makes circle cutting easier



All-round Flat Surface

A universal type of flat surface usable for welding, plasma cutting, heating and defect detecting.

Convenient Tip's Support

Protecting the cutting tip from flaws, a convenient support to hold 3 tips

Smooth Speed Adjusting Dial

An easy accustoming design with a vernier to enable micro-adjustment.

Bright Pilot lamp

A bright lamp to indicate power ON.

Seat for fixing the Auxillary Stability Wheel

This is designed to install the 4-wheel structure for better stability.

PART 4 Plate track and accessories

Optional accessories

Straight rail:

Each track of 1.8 m (72") long is extensible to the requirement

Circle cutting attachment:

Recommended for cutting circles of large diameter: ϕ 50~2,400 mm

Circle cutting rail:

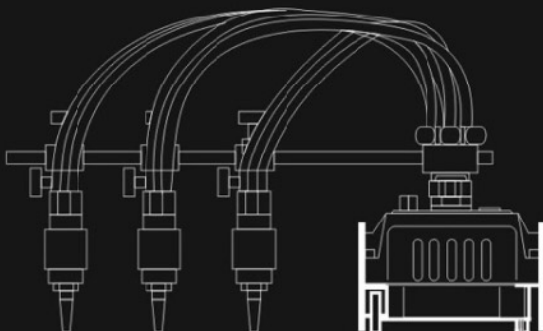
Recommended for cutting circles of comparatively large diameter

Cutting Range: ϕ 40~360 mm at inside and ϕ 1,150~2,400 mm at outside

Multiple - torch option

*Pipe arm (Long type 1,000mm)

Parallel cutting of wide products can be made with multiple torches



Long type arm for multiple-torch application

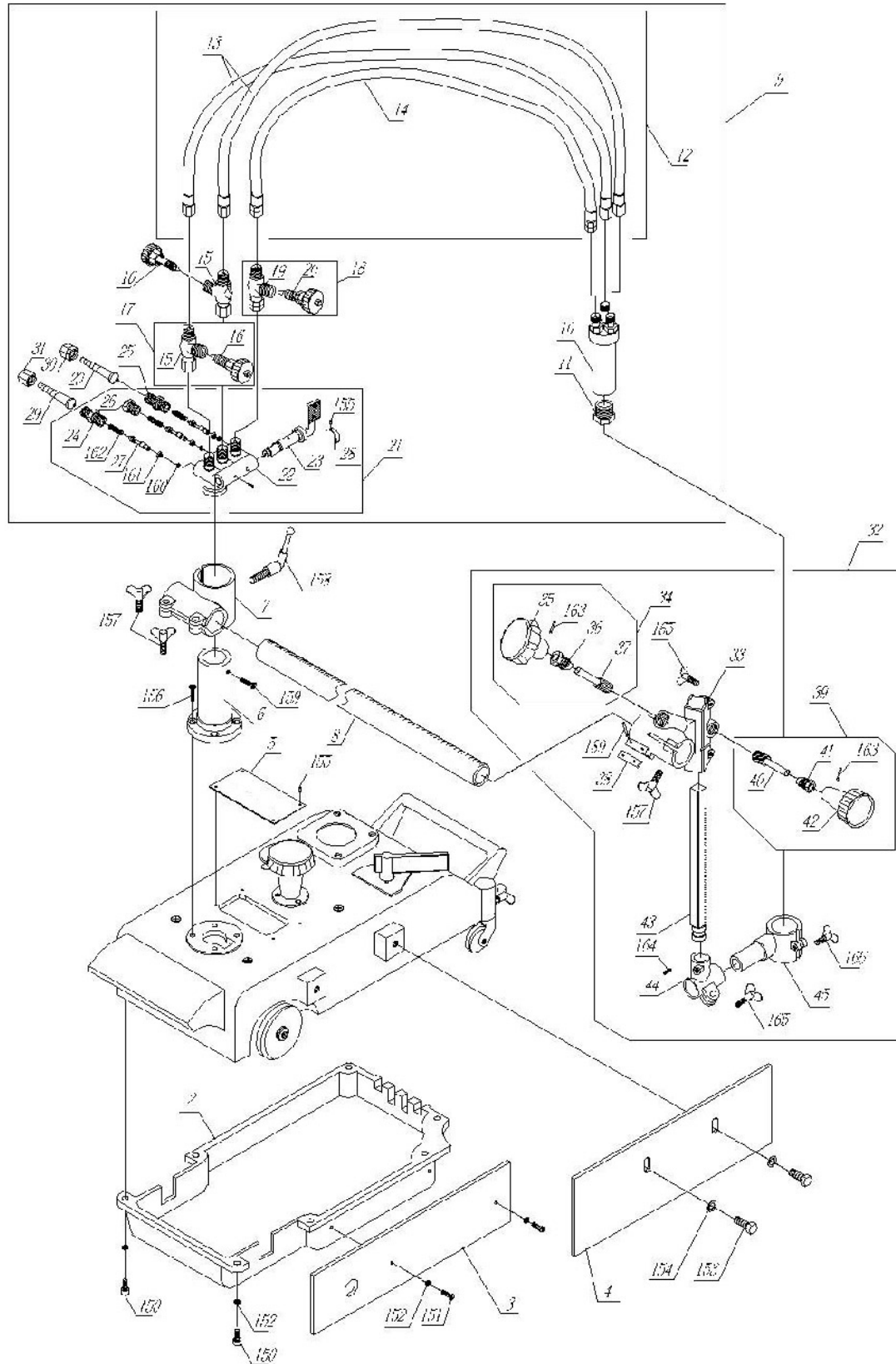


Circle cut w / radius rod

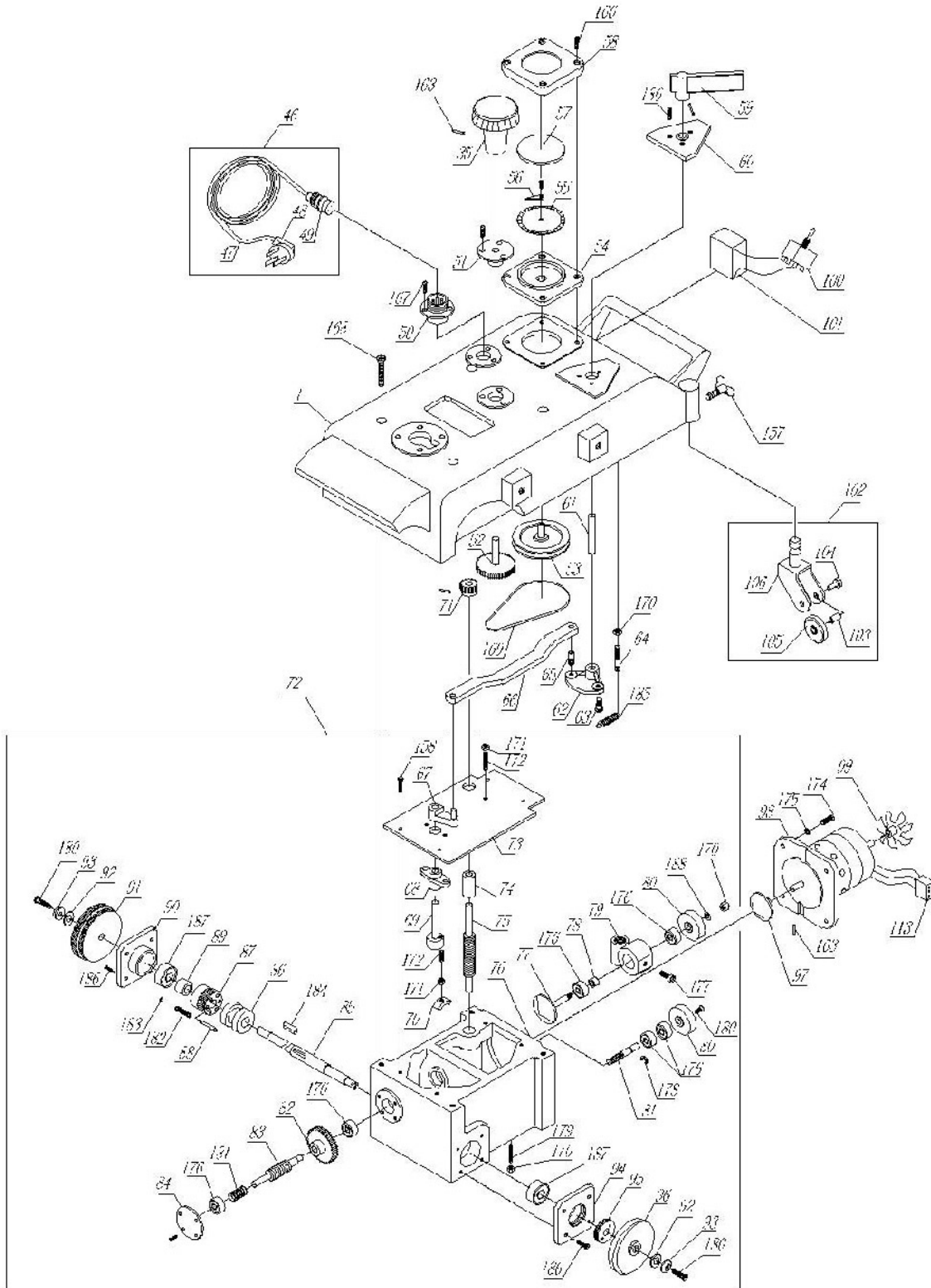


Circle cut w / circle rail

KI-12MAX3



KI-12MAX3



KI-12MAX3

No.	Part Name	Price
1220-001	Case	
1220-002	Bottom plate	
1220-003	Heat shield(Inner)	
1220-004	Heat shield(Outside)	
1220-005	Name plate	
1220-006	Stand	
1220-007	Bar holder	
1220-008	Pipe arm 350mm	
1220-009	Gas distribution assembly	
1220-010	Torch	
1220-011	Tip fixing Nut	
1220-012	Hose assembly	
1220-013	Oxygen hose	
1220-014	Gas hose	
1220-015	Oxygen valve body	
1220-016	Oxygen valve needle	
1220-017	Oxygen valve	
1220-018	Gas valve	
1220-019	Gas valve body	
1220-020	Gas valve needle	
1220-021	Gas distributor Incl.22-28	
1220-022	Gas distributor	
1220-023	Distributor handle	
1220-024	Coupler (Ox)	
1220-025	Coupler (gas)	
1220-026	Choke plug	
1220-027	Needle	
1220-028	Distributor plate	
1220-029	Hose connector	
1220-030	Nut for gas	
1220-031	Nut for oxygen	
1220-032	Feed assembly	
1220-033	Cross feed holder	
1220-034	Pinion unit	
1220-035	Handle A	
1220-036	Pinion metal A	
1220-037	Pinion A	
1220-038	Fixing metal plate	
1220-039	Lift handle unit	
1220-040	Pinion B	
1220-041	Pinion metal B	
1220-042	Handle B	
1220-043	Lift rack bar	
1220-044	Holder connection	
1220-045	Torch holder	
1220-046	Capture cord assembly	
1220-047	Cord	
1220-048	Rubber plug	

No.	Part Name	Price
1220-049	Metal plug	
1220-050	Metal socket	
1220-051	Pinion metal	
1220-052	Pulley gear with shaft	
1220-053	Pulley with shaft	
1220-054	Speed meter case	
1220-055	Speed meter graduation plate	
1220-056	Needle 1220-056	
1220-057	Glass	
1220-058	Speed meter cover	
1220-059	Clutch lever	
1220-060	Clutch metal	
1220-061	Clutch shaft	
1220-062	Clutch lever holder	
1220-063	Screw	
1220-064	Spring holding screw	
1220-065	Pin	
1220-066	Connecting bar	
1220-067	Lever	
1220-068	Lever metal	
1220-069	Lever shaft	
1220-070	slider	
1220-071	Gear	
1220-072	Transmission case assembly	
1220-073	Case cover plate	
1220-074	Worm sleeve	
1220-075	Speed adjusting shaft unit	
1220-076	Transmission case	
1220-077	Cone shaft	
1220-078	Drive gear retainer	
1220-079	Cone holder unit	
1220-080	Friction pulley	
1220-081	Drive gear shaft	
1220-082	Gear	
1220-083	Drive worm	
1220-084	Bearing cover	
1220-085	Drive wheel shaft	
1220-086	Clutch	
1220-087	Worm wheel	
1220-088	Pin	
1220-089	Bearing retainer	
1220-090	Fixing bearing cover	
1220-091	Drive wheel	
1220-092	Washer	
1220-093	Round washer	
1220-094	Adjusting bearing cover	
1220-095	Gland	
1220-096	Idle wheel	

KI-12MAX3

No.	Part Name	Price
1220-097	Motor disk	
1220-098	Motor	
1220-099	Motor fan	
1220-100	Forward/Reverse switch	
1220-101	Condenser	
1220-102	Idle wheel unit	
1220-103	Roller shaft	
1220-104	Screw	
1220-105	Roller	
1220-106	Idle wheel body	
1220-300	Rail 1.8m	
1220-300b	Rail 1.2m	
1220-301	Circle cutting attachment	
1220-302	Circle Rail (Dia. 1000mm)	

Model KC-12M/S-100 parts list for Special with one-touch snap valve

Standard parts for Model KC-12 MAX/S-100

Art. No.	Part Name	Price
1220-150	Socket head cap screw M5×12	
1220-151	Cap screw M5×12	
1220-152	Washer Ø5	
1220-153	Hexagonal head screw	
1220-154	Washer Ø10	
1220-155	Rivet Ø2×8	
1220-156	Countersunk screw M5×16	
1220-157	Wing screw M8×16	
1220-158	Button head screw M8×20	
1220-159	Semi-round head screw M4×8	
1220-160	O ring Ø61×9	
1220-161	Bowl shape ring Ø3	
1220-162	Valve needle spring	
1220-163	Elastic straight Pin Ø2.51×8	
1220-164	Cap Screw M5×8	
1220-165	Wing Screw M6×20	
1220-166	Countersunk screw M41×4	
1220-167	Countersunk screw M3×8	
1220-168	Countersunk screw M6×30	
1220-169	Spring Ø3×280	

Art. No.	Part Name	Price
1220-170	Hexagonal bolt M6	
1220-171	Hexagonal bolt M5	
1220-172	Grub screw M5×20	
1220-173	Cap screw M4×8	
1220-174	Half-round head screw M4×12	
1220-175	Collar Ø4	
1220-176	Bearing 608	
1220-177	Cap screw M6×14	
1220-178	Circip Ø5	
1220-179	Grub screw M6×16	
1220-180	Countersunk screw M5×12	
1220-181	Spring Ø16×15	
1220-182	Spring Ø4×20	
1220-183	Circlip Ø2	
1220-184	Flat key 5×5×25	
1220-185	Tension spring Ø10×28	
1220-186	Countersunk screw M4×8	
1220-187	Bearing 6201	
1220-188	Washer Ø6	
1220-189	Elastic straight Pin Ø2.5×12	

**HANDY AUTO / HANDY AUTO PLUS HUMMER
KIT IS A PORTABLE UNIVERSAL CUTTER**



You can carry it about freely, and it is mostly suitable for on-site field operations because of built-in auto ignition lighter

Free as you hand does. Powful application for straight cutting, curve cutting, bevelling cutting, circular cutting, pore cutting, H-beam cutting



**HANDY AUTO
CURVE
SERIES**



Hummer



gascut.com • export@gascut.com
886-574-88067871 • FAX: 0086-574-88067127



**SUMO[®]
INDUSTRIAL**

เครื่องตัดแก๊สแฮนด์ถือได้พลัส
Handy Auto Plus Gas Cutter

HANDY AUTO PLUS



เครื่องตัดแก๊สแฮนด์อัตโนมัติพลัส

HANDY AUTO PLUS

Portable Automatic Hand Cutting Torch

Features & benefits

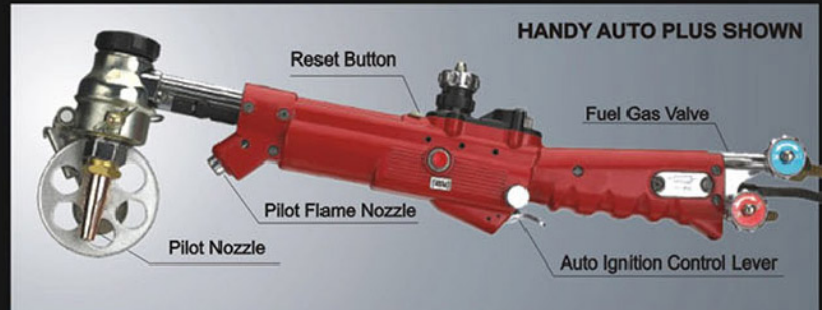
Standard all position drives - Allows for cutting from all positions.

High efficiency performance - Handy Auto drive switch is linked to the cutting oxygen valve causing simultaneous operation of cutting oxygen and drive power.

Drive attachments quickly changed - for all types of applications.

Highest cutting quality - Safe and long lasting tips supplied .

Standard configuration

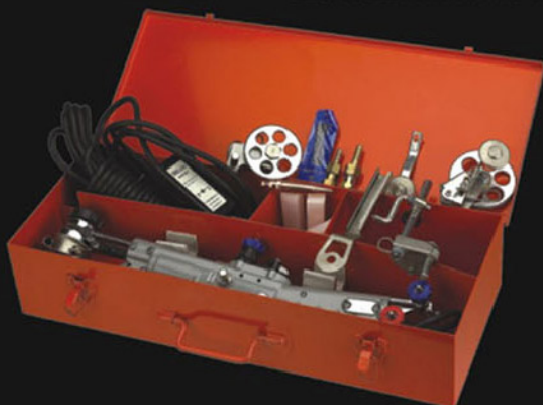


Multi-purpose use

The powerful Hummer / Hummer Plus can cut on vertical surface, angle surface, round surface and pipe surface. Make straight, arc or curve cutting and other contour cutting.

35,000.-

Lot 112836008055040



◆ Handy Auto kit contents (Weight 7.90kg)

No.	Item	Quantity
1	Cutter	1
2	Standard wheel	1
3	Auxiliary wheel	1
4	Wheel for bevel cutting	1
5	Attachment for small circle cutting	1
6	Running guide lever	1
7	Cutting tip ANME or PNME : #0, #1, #2	1 each
8	Spanner for nozzle replacement	1
9	Fuse (1A)	2
10	Carrying case	1



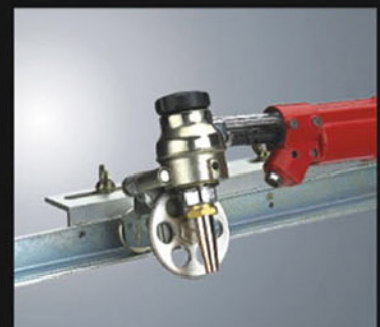
Small circle cutting attachment 30-120mm



Bevelling wheel set



Large / X-large circle cutting attachment 120-500 / 120-1,000mm (Optional)



Linear cutting guide unit (Optional)

Technical specification

Model No.	Drive system	Speed control	Length	Cutting thickness	Cutting speed(mm/min)	Weight(kg)
Handy Auto Plus (Hummer plus)	Friction drive	By transistor	500mm	5-30mm	150-530	3.50
Handy Auto (Hummer STD) W/o the ignition function						



**AUTOPIPE
PIPE
SERIES**



Swift

www.gazcul.com • export@gazcul.com
0086-574-80067971 • FAX: 0086-574-80067127



**SUMO[®]
INDUSTRIAL**

**เครื่องตัดท่ออัตโนมัติ
AUTOPIPE**

**MOTORIZED
CHAIN PIPE
CUTTING MACHINE**

11D



เครื่องตัดท่ออัตโนมัติ

AUTOPIPE

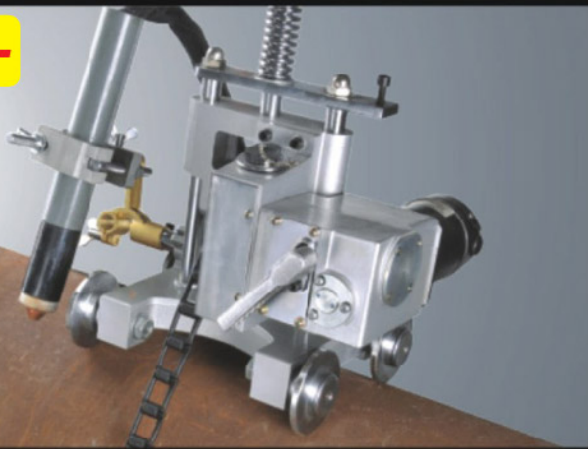
Motorized Chain Pipe Cutting machine

The machine is a remote control gas motorized pipe cutting unit and it is easy to change the length of the chain for various size pipes.

Features & benefits

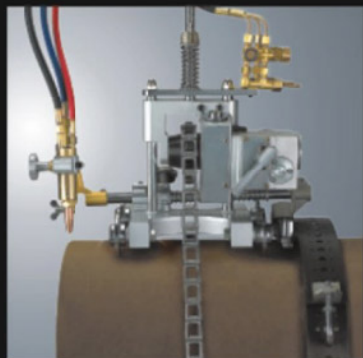
- ◆ Cutting can be done in clockwise or anti-clockwise direction from both sides of the machine
- ◆ The machine can bevel up to 45° by selecting the required angle on the torch holder
- ◆ The machine torch can be adjusted vertically and horizontally alongside the pipe surface by rack and pinion attachments
- ◆ The model Autopipe-P can also be used to cut stainless Steel and other Non-ferrous pipes by using Plasma Cutting Torch (Torch holder to suit your Plasma Cutting Torch can be supplied as an optional attachment)
- ◆ Remote Control Unit (1 set) supplied with the motorized version

68,000.-



AUTOPIPE-P (FOR PLASMA)

The portable plasma pipe cutting machine is designed to use plasma for high speed cutting of carbon steel, stainless steel, aluminum and other metals. The machine allows accurate bevel cutting of pipe and straight cut off of pipe in or out the field. (Torch holder to suit your Plasma Cutting Torch can be supplied as an optional attachment)



AUTOPIPE-S

The optional guide rail provides high cutting accuracy and makes the AUTOPIPE-S type plasma pipe cutting machine particularly suitable for large pipes. Countless professionals from fabricators and scrap yards to boiler makers and tank manufacturers have used this kind pipe cutting machines successfully.

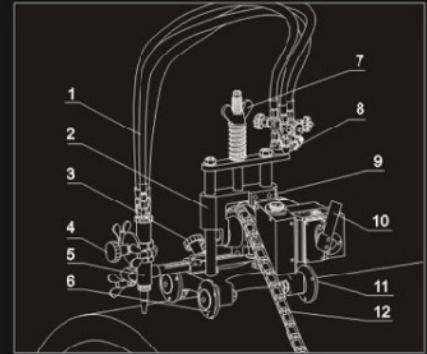


Guide rail (Optional)

The machine can be installed a tip guide system providing high cutting accuracy and makes the machine particularly suitable for large pipes. The fixed guide rail also makes it possible to cut vertical pipe.

Standard configuration

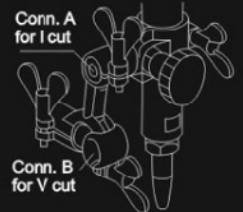
- 1.Hose
- 2.Bracket
- 3.Cross feed handle
- 4.Torch lift handle
- 5.Torch
- 6.Guide wheel
- 7.Big wing bolt
- 8.Distributor
- 9.Gear box connection
- 10.Clutch handle
- 11.Main base
- 12.Chain



Bevel cutting

Beveling application with double-connection

Torch holder unit has 2 torch connections. The upper one (A) is for square cutting, The lower one (B) is for beveling, pls fix the torch for beveling as per the graduated bevel collar with 5° per division



Remote control panel assembly

Adjusting Length of Chain

The length of the chain can be adjusted link by link, making it easy to match the chain to the circumference of the pipe. The number of links required for a given job can be calculated as follows:

$$\text{Number of Links} = \text{Pipe Diameter} \times 1/10 + 13$$

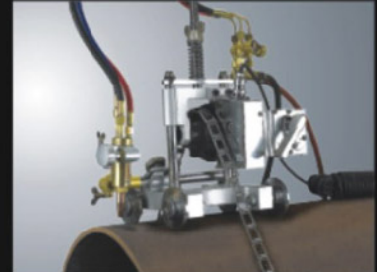
(For millimeter: Pipe Diameter $\times 1 + 13$; Round up to next link)

(For inch: Pipe Diameter $\times 2.54 + 13$; Round up to next link)

Example of Calculation:

$$\text{Number of links required for cutting } \phi 200\text{mm pipe } (200 \times 1/10) + 13 = 33$$

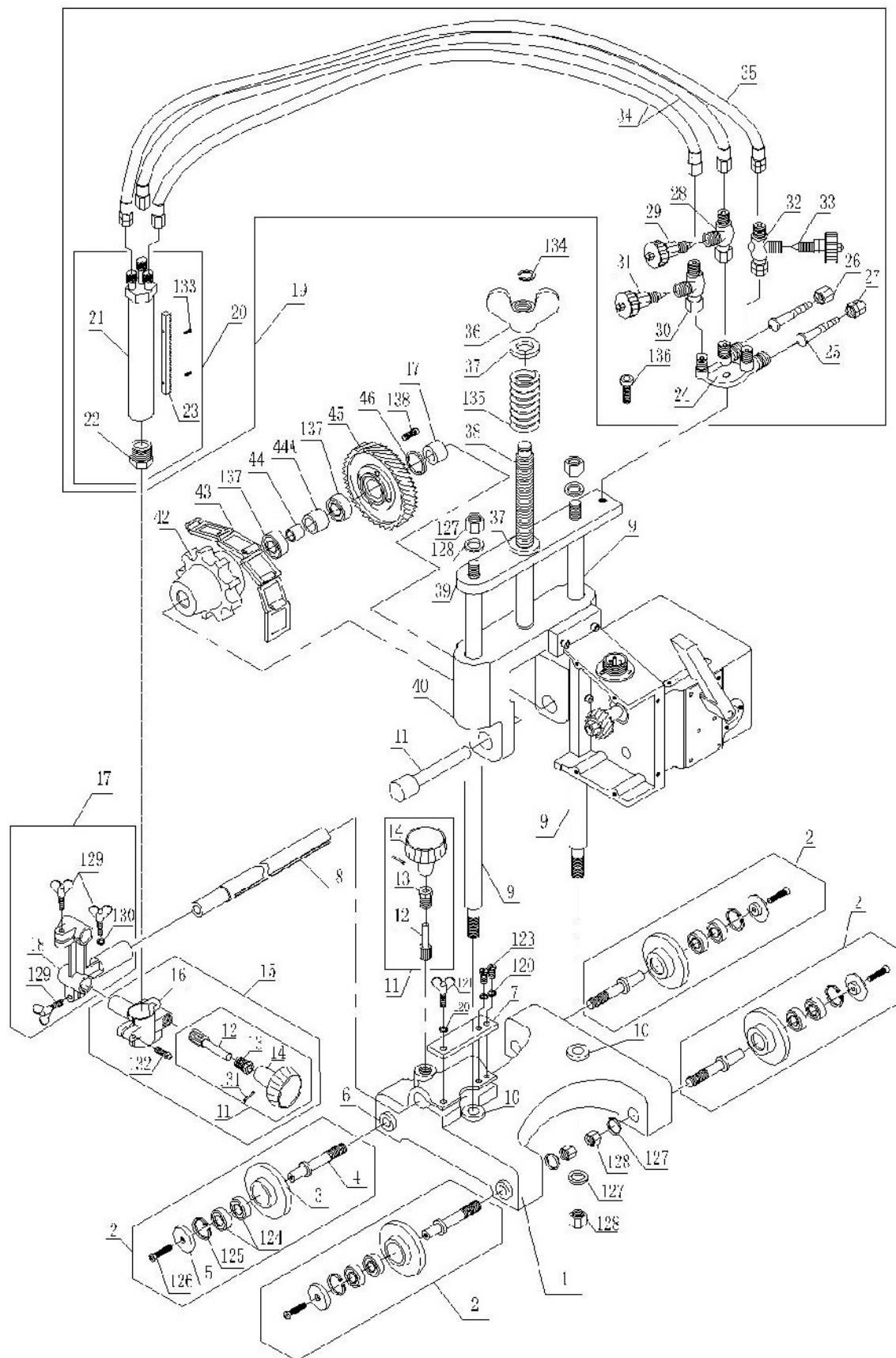
Additional chain links are available.



Chain type	Single link chain
Quick release clutch	With
Cutting speed	50-1150mm/min
Effective pipe diameter	150-600mm by standard chain Larger size over 600mm by extra chain
Cutting thickness	Up to 50mm
Cutting shape	Square and bevel (up to 45°)
Drive method	Motorized
Main size (mm)	265×420×450
Weight (kg)	16

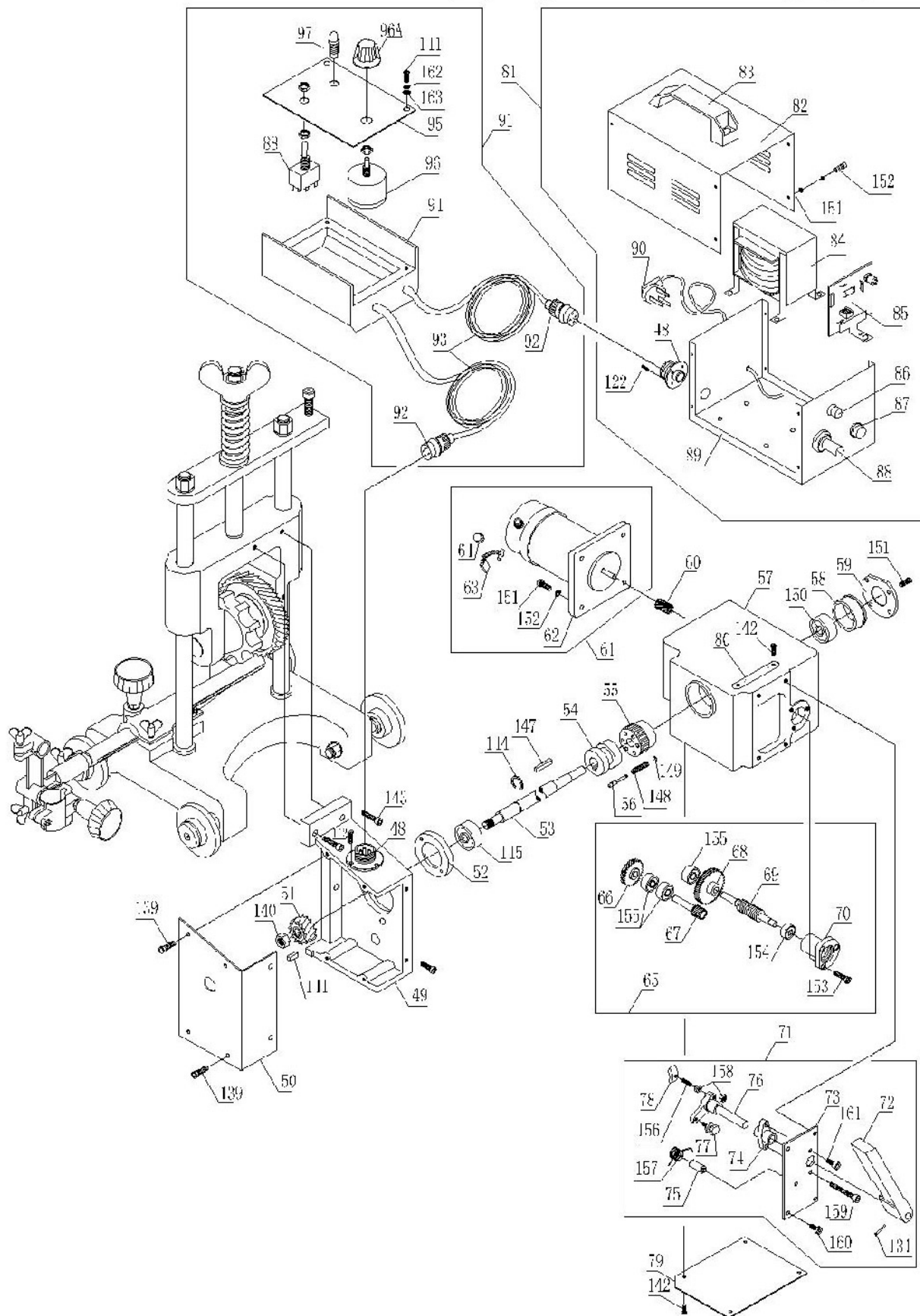
AUTOPIPE-11D

Model Autopipe Parts drawing (1)



AUTOPIPE-11D

Model Autopipe parts drawing (2)



AUTOPIPE-11D

Parts List for motorized pipe gas cutting machine Model Autopipe

Item No.	Part Name	Qty	Stock No.	Item No.	Part Name	Qty	Stock No.
001	Body base	1	1212001	038	Lift shaft	1	1212038
002	Guide wheel assembly	4	1212002	039	Upper plate	1	1212039
003	Guide wheel	4	1212003	040	Slide bracket	1	1212040
004	Guide wheel shaft	4	1212004	041	Sprocket shaft	1	1212041
005	Gland	4	1212005	042	Sprocket	1	1212042
006	Shaft sleeve	6	1212006	043	Chain	1	1212043
007	Rack bar locking pin	1	1212007	044a	Collar (B)		
008	Cross-feed rack bar	1	1212008	044b	Collar (C)	1	1212044
009	Slide shaft	2	1212009	045	Big drive gear	1	1212045
010	Slide shaft sleeve	2	1212010	046	Sprocket washer	2	1212046
011	Cross feed pinion unit	2	1212011	047	Collar (A)	1	1212047
012	Pinion	2	1212012	048	Metal socket	1	1212048
013	Pinion metal	2	1212013	049	Transmission case connection	1	1212049
014	Handle	2	1212014	050	Dust-proof cover	1	1212050
015	Torch holder assembly	1	1212015	051	Small spiral gear	1	1212051
016	Torch holder	1	1212016	052	Eccentric sleeve	1	1212052
017	Torch holder base assembly	1	1212017	053	Output main axle	1	1212053
018	Torch holder base	1	1212018	054	Clutch	2	1212054
019	Gas distribution system	1	1212019	055	Clutch worm	2	1212055
020	Torch assembly	1	1212020	056	Clutch pin	1	1212056
021	Torch body	1	1212021	057	Transmission case	1	1212057
022	Torch nut	1	1212022	058	Bear sleeve	1	1212058
023	Rack	1	1212023	059	Bear cover	1	1212059
024	Gas distributor	1	1212024	060	Motor gear	1	1212060
025	Hose connector	2	1212025	061	Motor assembly	2	1212061
026	Nut for oxygen	1	1212026	062	Motor	1	1212062
027	Nut for gas	1	1212027	063	Carbon brush		1212063
028	Preheating oxygen valve body	1	1212028	064	Carbon cap	1	1212064
029	Preheating oxygen valve needle	1	1212029	065	Reduction gear assembly	1	1212065
029a	Preheating oxygen valve	1	1212029	066	Passive spiral gear		1212066
030	Cutting oxygen valve body		1212030	067	Gear shaft		1212067
031	Preheating oxygen valve needle	1	1212031	068	Reduction gear		1212068
032	Gas valve body	1	1212032	069	Worm shaft		1212069
033	Gas valve needle	1	1212033	070	Worm shaft retainer		1212070
033a	Gas valve	1	1212033	071	Clutch assembly		1212071
034	Oxygen hose	2	1212034	072	Clutch handle		1212072
035	Gas hose	1	1212035	073	Locating plate		1212073
036	Wing handle	1	1212036	074	Fixing seat		1212074
037	Washer	2	1212037	075	Spring rod		1212075

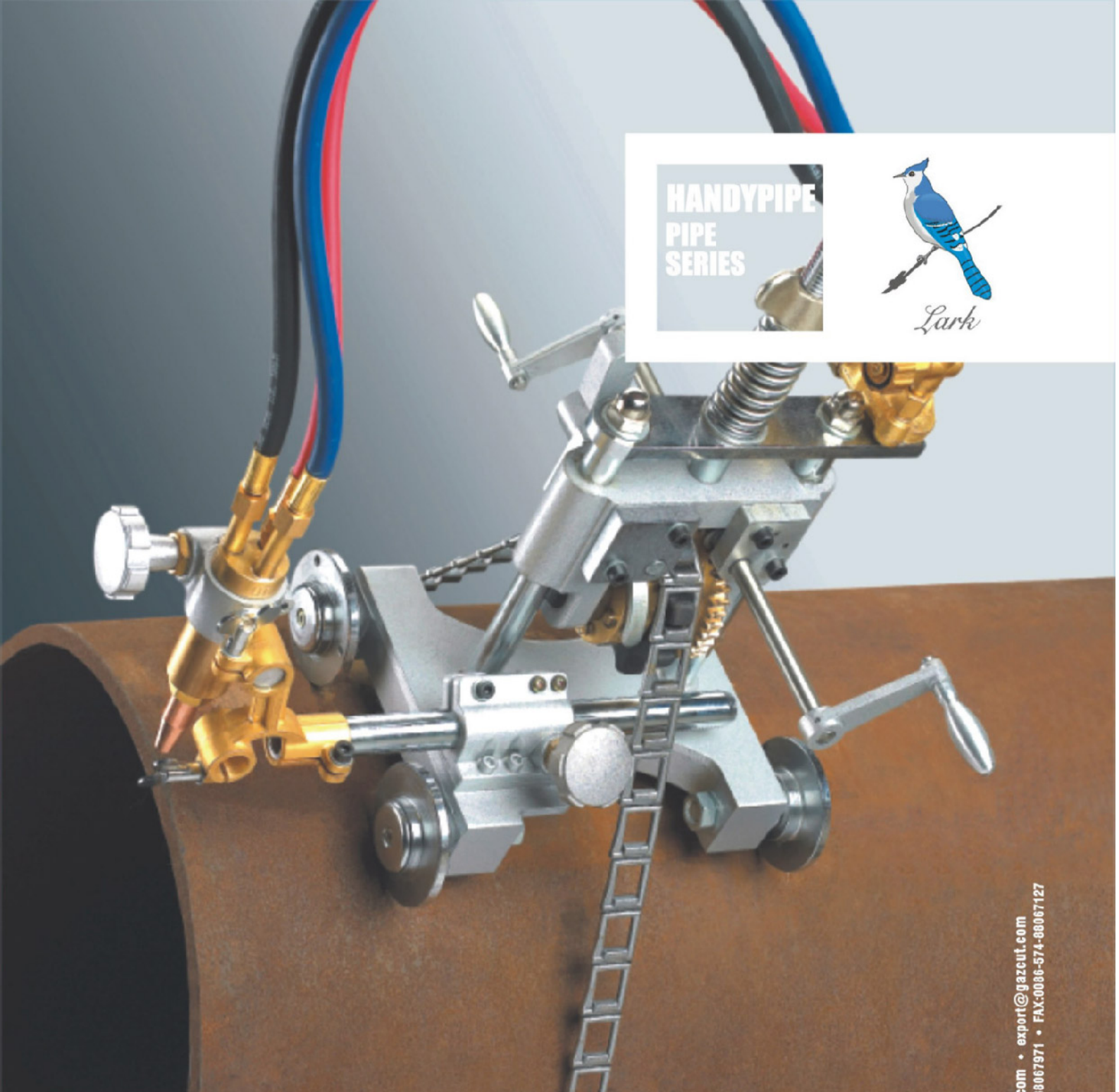
AUTOPIPE-11D

076	Clutch rotating rod	1212076	087	Fuse	1212087
077	Spring	1212077	088	Power switch	1212088
078	Clutch shift block	1212078	089	Electric box bottom cover	1212089
079	Transmission bottom plate	1212079	090	Rubber plug	1212090
080	Clutch label	1212080	091	Remote control box assembly	1212091
081	Electric box assembly	1212081	092	Metal plug	1212092
082	Electric box cover	1212082	093	Cord	1212093
083	Electric box handle	1212083	094	Remote control box	1212094
084	Transformer	1212084	095	Control board	1212095
085	Circuit board	1212085	096	Condenser	1212096
086	Power lamp	1212086	097	Power indicator	1212097

Standard Parts List for Manual pipe cutting machine Model Autopipe

120	Plain cushion Ø5	1212120	143	Inner hexagon screw M6×20	1212143
121	Wing bolt M5×20	1212121	144	Circlip Ø14	1212144
123	Cap screw M5×12	1212123	145	Bearing 6302	1212145
124	Bearing 6001	1212124	146	Circlip Ø14	1212146
125	Inner circlip Ø28	1212125	147	Common flat key M5×5×25	1212147
126	Countersunk head screw M5×12	1212126	148	Spring M6×12	1212148
127	Plain cushion Ø12	1212127	149	Circlip Ø4	1212149
128	Hexagon bolt M12	1212128	150	Bearing 6300	1212150
129	Wing bolt 6×15	1212129	151	Countersunk head screw M4×12	1212151
130	Plain cushion Ø6	1212130	152	Plain cushion Ø4	1212152
131	Elastic straight Pin Ø2.5×18	1212131	153	Cap Screw M4×16	1212153
132	Cap screw M6×20	1212132	154	Bearing 607	1212154
133	Cap screw M3×6	1212133	155	Bearing 608	1212155
134	Circlip Ø10	1212134	156	Tightening screw M5×12	1212156
135	Spring Ø32×60	1212135	157	Spring Ø12	1212157
136	Inner hexagon screw M8×16	1212136	158	Hexagonal nut M5	1212158
137	Bearing 6004	1212137	159	Inner hexagon screw M5×30	1212159
138	Cap screw M5×20	1212138	160	Cap screw M4×12	1212160
139	Semi-round head nut M4×8	1212139	161	Inner hexagon screw M5×12	1212161
140	Hexagon nut M10	1212140	162	Elastic cushion Ø3	1212162
141	Common flat key M4×4×8	1212141	163	Plain cushion Ø3	1212163
142	Semi round head screw M3×8	1212142			

HANDYPIPE
PIPE
SERIES



com • export@gazcutl.com
38067971 • FAX:0086-574-86067127



SUMO[®]
INDUSTRIAL

เครื่องตัดท่อด้วยมือ
Manual Pipe Cutter

CG2-11G



เครื่องตัดท่อด้วยมือ

Manual Pipe Cutter

Hand Crank Pipe Cutting Machine

This manually operated portable oxy-fuel pipe cutting machine uses a chain and gear drive system. The drive chain is comprised of durable, interlocking links that can easily be added or removed for quick change of pipe diameters. A graduated bevel collar ensures accurate bevel setting. The control valves for fuel, preheat oxygen and cutting oxygen are positioned away from heat yet conveniently placed for easy operator use.

Features & benefits

Oxy-fuel Pipe Cutter - Bevel cut or straight cut steel pipe

Manually Operated - No power needed to cut pipe; ideal for field use

Interlocking Chain Links - Add or remove links as needed for various size pipes; Standard chain configuration: 2.4m (82pcs chain links) with longer chain linkage optional.

Lightweight - At only 9kg (19.8 lbs) this unit is easy to carry, operate and maintain

Worm Gear Drive - Low gear ratio ensures extremely smooth travel

Optional Snap Valve - One-touch on/off gas valve



Adjusting Length of Chain

The length of the chain can be adjusted link by link, making it easy to match the chain to the circumference of the pipe. The number of links required for a given job can be calculated as follows:

Number of Links = Pipe Diameter \times 1/10 + 13

(For millimeter: Pipe Diameter \times 1+13; Round up to next link)

(For inch: Pipe Diameter \times 2.54+13; Round up to next link)

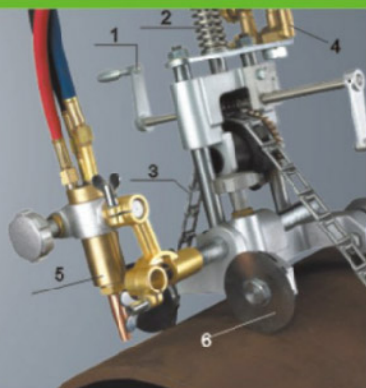
Example of calculation:

Number of links required for cutting ϕ 200mm pipe $(200 \times 1/10) + 13 = 33$

The cutting machine can be easily set at any part of the pipe that is convenient. Additional chain links are available.

Lark shown

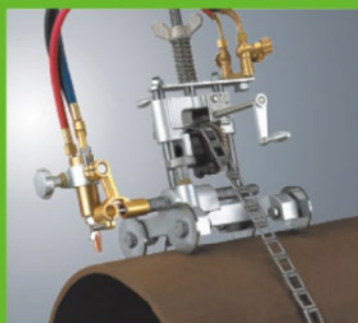
1. Wing nut
2. Spring
3. Chain
4. Distributor
5. Torch
6. Guide wheel



Bevel Cutting

Beveling application with double-connection.

Torch holder unit has 2 torch connections. The upper one (A) is for square cutting. The lower one (B) is for beveling, pls fix the torch for beveling as per the graduated bevel collar with 5° per division.



20,000.-

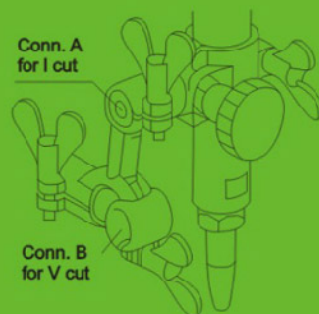
Lot. 112836008055040

Lark

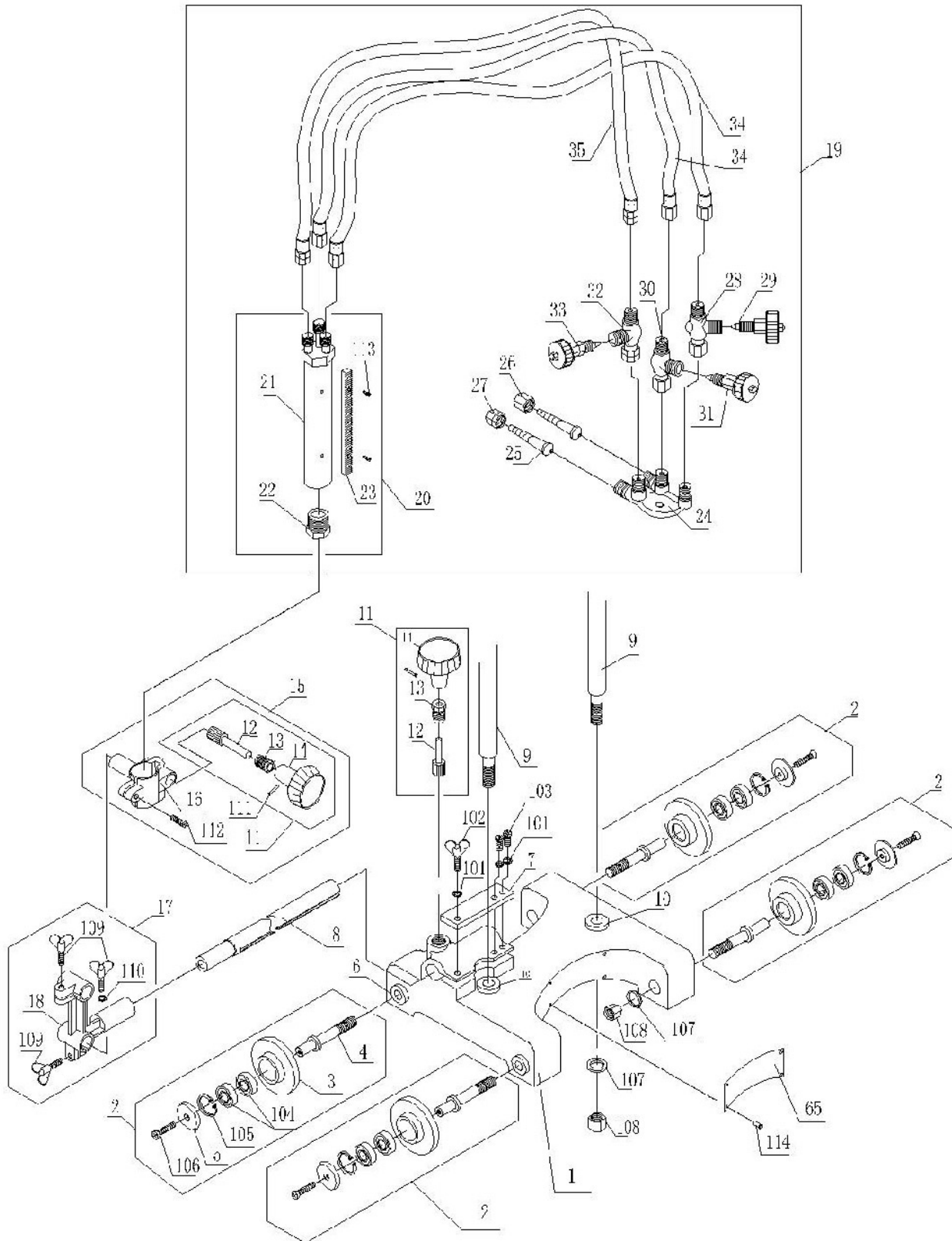
Lark-Q (with quick stop clutch)

Technical specification

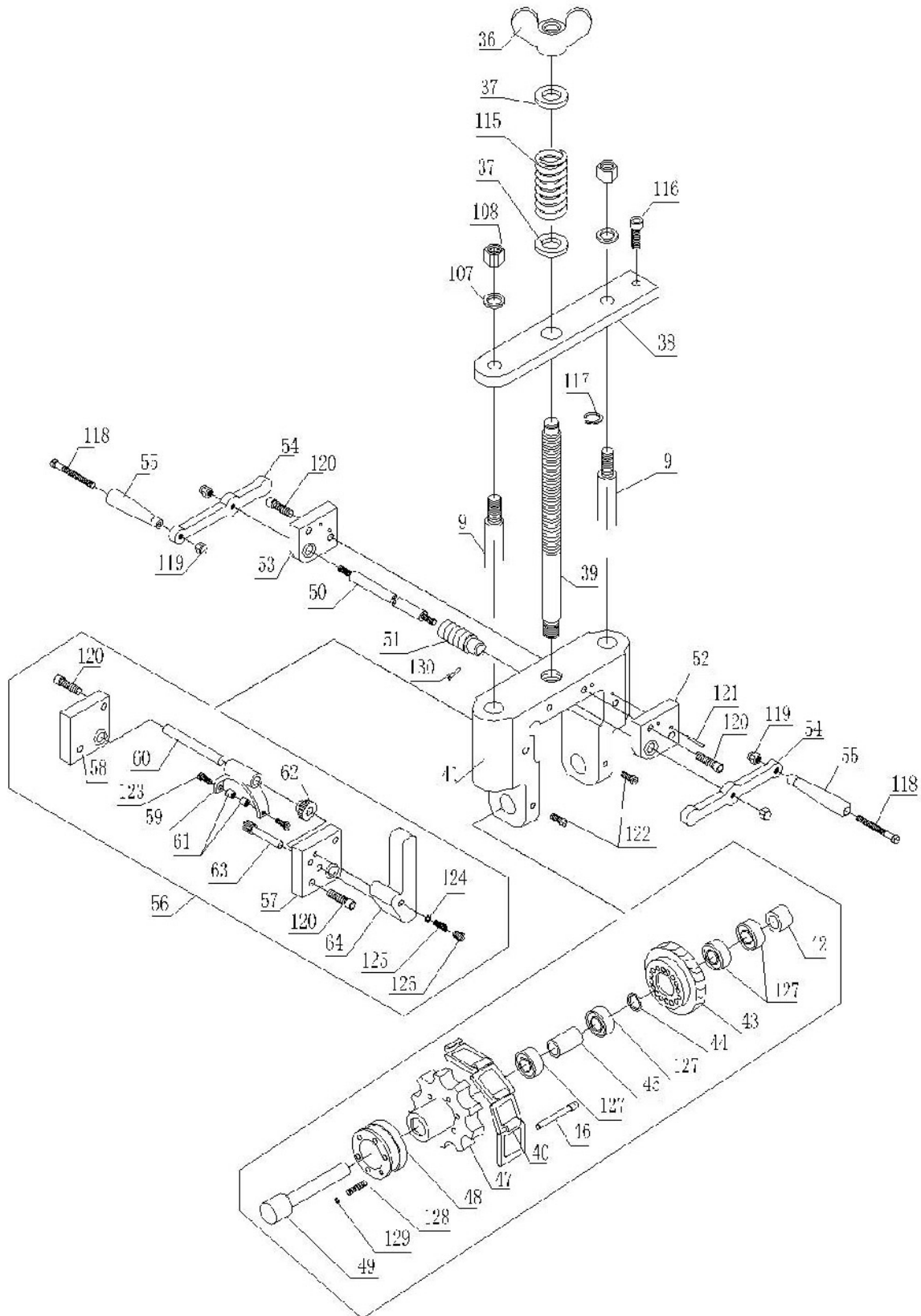
Specifications	Lark	CG2-11G
Chain type	Single link chain	Single link chain
Quick clutch	None (Same as Kolke type)	With
Effective pipe diameter	114~600mm (4"~24") by standard chain (2.4m=96") Over 600mm by extra chain addition	114~600mm (4"~24") by standard chain (2.4m=96") Over 600mm by extra chain addition
Cutting thickness	Up to 50mm (2")	Up to 50mm (2")
Cutting shape	Square and bevel (up to 45°)	Square and bevel (up to 45°)
Drive method	Manual	Manual
Size	250×250×400	280×280×450
Weight	10.5kg	13kg
Price	-	Lot. 112836008055040 20,000.-



CG2-11G



CG2-11G



CG2-11G

Parts List for manual pipe gas cutting machine Model Handypipe-Q

Item No.	Part Name	Qty	Stock No.	Item No.	Part Name	Qty	Stock No.
001	Body base	1	1210001	033a	Gas valve	1	1210033
002	Guide wheel assembly	4	1210002	034	Oxygen hose	2	1210034
003	Guide wheel	4	1210003	035	Gas hose	1	1210035
004	Guide wheel shaft	4	1210004	036	Wing handle	1	1210036
005	Gland	4	1210005	037	Washer	2	1210037
006	Shaft sleeve	6	1210006	038	Upper plate	1	1210038
007	Rack bar locking pin	1	1210007	039	Lift shaft	1	1210039
008	Cross-feed rack bar	1	1210008	040	Chain	1	1210040
009	Slide shaft	2	1210009	041	Slide bracket	1	1210041
010	Slide shaft sleeve	2	1210010	042	Sprocket shaft sleeve	1	1210042
011	Cross feed pinion unit	2	1210011	043	Worm	1	1210043
012	Pinion	2	1210012	044	Spacer	1	1210044
013	Pinion metal	2	1210013	045	Bush	1	1210045
014	Handle	2	1210014	046	Clutch pin	2	1210046
015	Torch holder assembly	1	1210015	047	Sprocket	1	1210047
016	Torch holder	1	1210016	048	Clutch	1	1210048
017	Torch holder base assembly	1	1210017	049	Sprocket shaft	1	1210049
018	Torch holder base	1	1210018	050	Worm shaft	1	1210050
019	Gas distribution system	1	1210019	051	Worm gear	1	1210051
020	Torch assembly	1	1210020	052	Front slide plate	1	1210052
021	Torch body	1	1210021	053	Back slide plate	1	1210053
022	Torch nut	1	1210022	054	Handle arm	2	1210054
023	Rack	1	1210023	055	Handle	2	1210055
024	Gas distributor	1	1210024	056	Clutch assembly	1	1210056
025	Hose connector	2	1210025	057	Front shifting yoke locator	1	1210057
026	Nut for oxygen	1	1210026	058	Back shifting yoke locator	1	1210058
027	Nut for gas	1	1210027	059	shifting yoke	1	1210059
028	Preheating oxygen valve body	1	1210028	060	shifting yoke shaft	1	1210060
029	Preheating oxygen valve needle	1	1210029	061	shifting yoke locator	2	1210061
029a	Preheating oxygen valve	1	1210029	062	Shifting yoke gear	1	1210062
030	Cutting oxygen valve body		1210030	063	Shifting yoke pinion		1210063
031	Preheating oxygen valve needle	1	1210031	064	Clutch handle	1	1210064
032	Gas valve body	1	1210032	065	Brand plate	1	1210065
033	Gas valve needle	1	1210033				

CG2-11G

Standard Parts List for Manual pipe cutting machine Model Handypipe-Q

101	Plain cushion Ø5		1210101	116	Inner hexagon screw M8×20		1210147
102	Wing bolt M5×23		1210102	117	External circlip Ø10		1210148
103	Cap screw M5×12		1210103	118	Cap screw M6×60		1210149
104	Bearing 6001		1210104	119	Sealing nut M6		1210150
105	Inner circlip Ø28		1210105	120	Inner hexagon screw M6×20		1210151
106	Countersunk head screw M5×16		1210106	121	Elastic straight Pin Ø4×22		1210152
107	Plain cushion Ø12		1210107	122	Cap screw M6×10		1210153
108	Hexagon bolt M12		1210108	123	Cap screw M5×8		1210154
109	Wing bolt 6×14		1210109	124	Steel ball Ø6		1210155
110	Plain cushion		1210110	125	Spring Ø6×12		1210156
111	Elastic straight Pin Ø2.5×18		1210111	126	Tightening screw M8×8		1210157
112	Cap screw M6×22		1210112	127	Bearing 6201		1210158
113	Cap screw M3×6		1210113	128	Spring Ø7×22		1210159
114	Rivet Ø2×8		1210114	129	Circlip Ø4		1210160
115	Spring Ø32×60		1210115	130	Elastic straight Pin Ø2.5×12		1210161

PC-22

**PIPE
SERIES**



Toucan

com • export@gazcut.com
8067971 • FAX:0086-574-08067127



**SUMO[®]
INDUSTRIAL**

เครื่องตัดท่อด้วยมือ
Manual Pipe Cutter

PC-22



PC-22 Toucan

Super Manual Pipe Cutting Machine With Double-buckle Chain

Model PC-22 is a manually operated, portable oxy-fuel pipe cutting machine. The body base is with multiple choices for wheel location so that the machine can match with wide range size of pipe by adjusting wheel location.

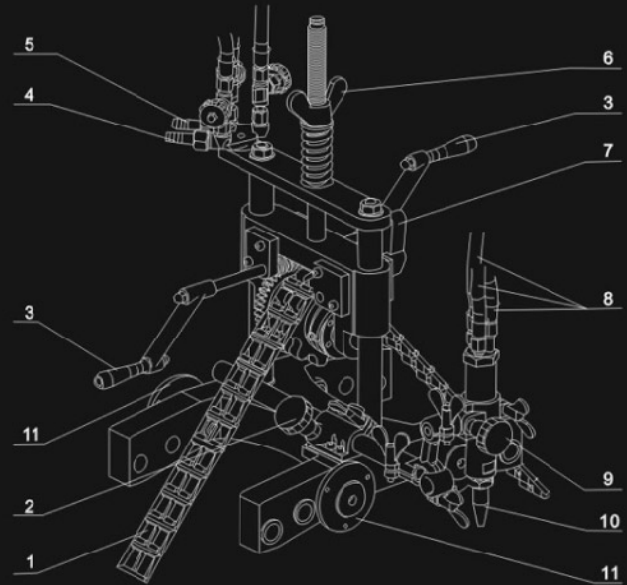
Features & benefits

- Double-link chain**-Equipped with a special double-buckle linking chain kit for more firm locating
- Interlocking Chain Links** - Add or remove links as needed for various size pipes; Standard chain configuration :3.5m (115pcs chain links) with longer chain linkage optional
- Quick Stop**-With a quick stopper can help to stop easily the bracket rotating in time
- Oxy-fuel Pipe Cutter** - Bevel cut or straight cut steel pipe
- Worm Gear Drive** - Low gear ratio ensures extremely smooth travel

28,000.-

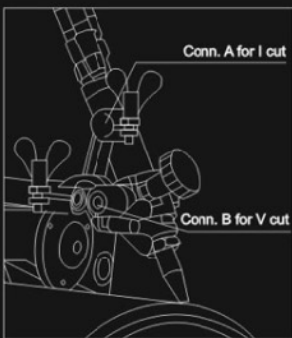


Standard configuration



- Double-buckle link
- Cross feed handwheel
- Crank handle
- Fuel gas connection
- Oxygen connection
- Big wing nut
- Clutch release handle
- Hose
- Torch lift handwheel
- Cutting tip
- Guide wheel

Beveling application



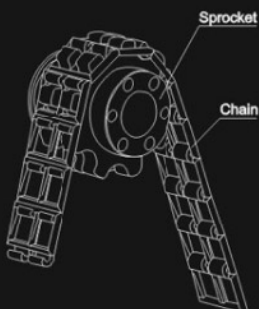
Double-connection holder

Torch holder unit has 2 torch connections. The upper one (A) is for square cutting, The lower one (B) is for beveling, pls fix the torch for beveling as per the graduated bevel collar with 5° per division.

Technical specification

Chain type	Double-link chain
Quick clutch	With
Effective pipe diameter	250~1000mm by standard chain Over 1000mm by extra chain addition
Cutting thickness	Up to 50mm (2")
Cutting shape	Square and bevel (up to 45°)
Drive method	Manual
Size (mm)	515×370×510
Weight (kg)	16.5

Adjusting length of chain



The chain is linked by special double-buckle and it's length can be adjusted link by link, making it easy to match the chain to the circumference of the pipe
The number of links required for a given job can be calculated as following:
Number of links=Pipe diameter (cm) +15
Example of calculation:
Number of links required for cutting 755mm pipe
 $76+15=91$ (755mm≈76cm)
Number of links required for cutting 752mm pipe
 $75+15=90$ (752mm≈75cm)

CG2-150

PROFILING
SERIES



Monkey

sum • export@gazcut.com
0067971 • FAX:0086-574-88067127



SUMO[®]
INDUSTRIAL

เครื่องตัดแก๊สตามแบบ
Profiling Gas Cutter

CG2-150



CG2-150 Series Monkey,Ape,Bear

Outside Profiling Cutting Machine

CG2-150 Monkey, Standard type
CG2-150R Ape (Rail type)

CG2-150A Monkey A (Big size)
CG2-150T Bear (Thick plate type)

These machines are primarily meant for cutting different shapes such as stars, hexagons, squares, rectangles, circles, triangles etc. It can also cut straight lines and bevel up to 45°.

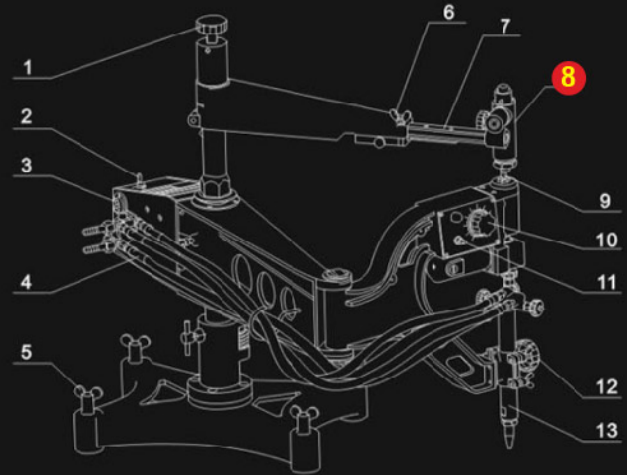
Features & benefits

- ◆ The motor driven Electro Magnetic Tracing Head on the carriage arm traces the profile on the template, this enables the torch to duplicate any intricate shape provided on the template of the machine
- ◆ The machines are designed with pantograph type arms providing a direct line guiding system
- ◆ A simple and accurate magnetic tracing system helps in maintaining repeatability of the flame cut parts
- ◆ Precise ball and needle bearing design of hinges ensure free and frictionless tracing, enabling greater cutting accuracy
- ◆ The speed of the machine can be varied with an indexed selector knob. The tracing head can be moved in clockwise or anticlockwise direction by a selector
- ◆ Light weight, portable yet robust shape cutting machines suitable for on field jobs as well as for factories



CG2-150

Standard configuration



- 1.Lift hand wheel for main shaft
- 2.Power switch
- 3.Power socket
- 4.Hose
- 5.Bottom fixing screw
- 6.Arm locking screw
- 7.Arm
- 8.Template holder
- 9.Magnet head
- 10.Speed control dial
- 11.Direction switch
- 12.Torch lift handwheel
- 13.Torch

8.Template holder



1,900.-

Technical specification

Model	CG2-150/150R	CG2-150A	CG2-150T
Rectangle cutting area	400×900 mm 450×750 mm	340×1700 mm 500×1650 mm	400×900mm 450×750mm
Template position	mounted on template holder	mounted on template holder or Central Shaft	mounted on template holder
Square cutting area	500×500mm	1270×1270mm	500×500mm
Circle cutting area	φ 20-600	φ 20-1800	φ 20-600
Max cutting length	1200mm	1650mm	1200mm
Max. cutting thickness	100 mm	100mm	200mm
Cutting speed with 12.7 mm tracer		100 to 750 mm/min	
Control		S.C.R Control	
Torch		Injector Type to suit Acetylene / LPG	
Gross weight	57/62kg	62kg	59kg
Dimensions (mm)	1190×335 × 800/870	1390 × 335 × 800	1190 × 335 × 1000



Outside Profiling Cutting Machine

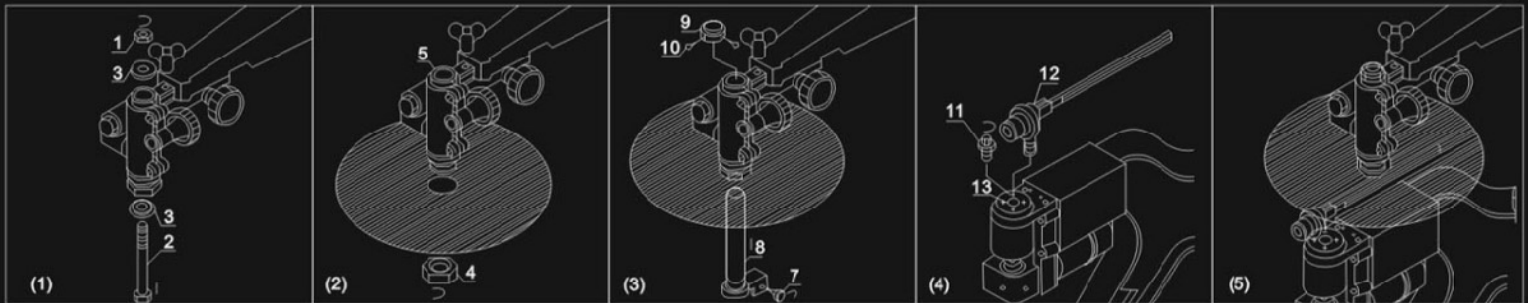


36,500.-

Lot 112836008055029



Circle Cutting Unit installation

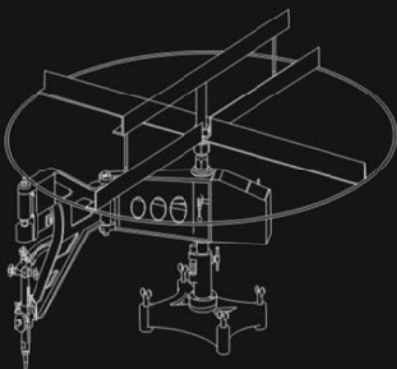


STEPS AS BELOW:

1. Loose Part 1 (Nut) and dismantle Part2, Part3; As shown in diagram (1)
2. Loose Part 4 (Big nut), take out Part 5, Put the circle temple inside and tighten the Part 4 (Big nut), As shown in diagram (2).
3. Screw Part 7 into Part 8, Insert the Part 8 into Part 5, then fix Part 9 into 8 and tighten the Part 10 (Screw), As shown in diagram (3)
4. Take Part 11 out from Part 13 (Magnet seat), then insert the Part 12 into Part 13.
5. Then insert Part 12 into the slot on Part 8, adjust the location according to the cutting circle diameter, then tighten by screw Part 7, As shown in diagram (5).

Template installation onto the main shaft

When cut the circle or arc within range $\phi 800\text{mm}-1800$. drill first a hole $\phi 36\text{mm}$, dismantle the arm assembly and arm assembly tube connection, install the template tube connection enclosed with the delivery onto the main shaft, then insert the template onto the template tube connection. Adjust the space between the template and magnet head and fix the template by 2 hexagonal nuts. As the template is comparatively big, the far end will drop when the center is fixed. So install the angle bar (Enclosed with the delivery) on the top tube connection. use the screws on two ends to hang the template in a horizontal plane. As shown in diagram.

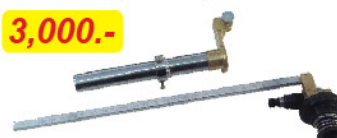


Note: The template shown in the diagram is only for illustration.

ชุดวงเวียน

Circular cutting assembly

3,000.-



ลูกกลิ้งแม่เหล็ก

Magnetic roller

400.-



มอเตอร์

Motor

4,000.-





CG2-2700 Pongo

Heavy Duty Outside Profiling Cutting Machine

Pongo is a heavy duty, foundation mountable, cantilever type robust shape cutting machine suitable for a large number of duplication jobs, particularly for multiple shift type production applications

Features & benefits

- ◆ The machine is made of high-strength Al-alloy for less weight.
- ◆ The foundation is fitted with wheels for easy travelling.
- ◆ The machine compose a copying unit driven by servo motor by S.C.R control for 100-750mm/min stepless speed cutting.
- ◆ Long template arm makes sure the flexible & firm position, less deformation.

Technical specification

Rectangle cutting area	650×2500 mm
Square cutting area	1900×1900mm
Circle cutting area	φ 20-2700mm
Max. cutting length	2500mm
Max. cutting thickness	100mm
Cutting speed	50-750mm/min
Torch	Injector Type to suit Acetylene / LPG
Gross weight	114 kg
Dimensions	1300×4800×800mm



Packing list of standard configuration

For all GC2-150 series and GC2-2700

1.Main unit	1 unit
2.Gas distributor assembly inc. torch	1 set
3.Cutting tip	3pcs 1,2,3# each(LPG or Acetylene)
4.Power cord set	1
6.Inlet connection	1set
Standard Auxiliaries	
1.Circle cutting unit	1set
2.Balance weight	1set
3.Circle template	1pc
4.Angle bar and template tube connection (Only for GC2-150A)	1pc each
5.Rail (Only for GC2-150R)	1pc
6.Heat shield board only for GC2-150T	1pc

CG2-150

ชุดสายตัด 4 เส้น
Hose Set for CG2-150

2,300.-



parts drawing (1)



46.Distributor

1,100.-



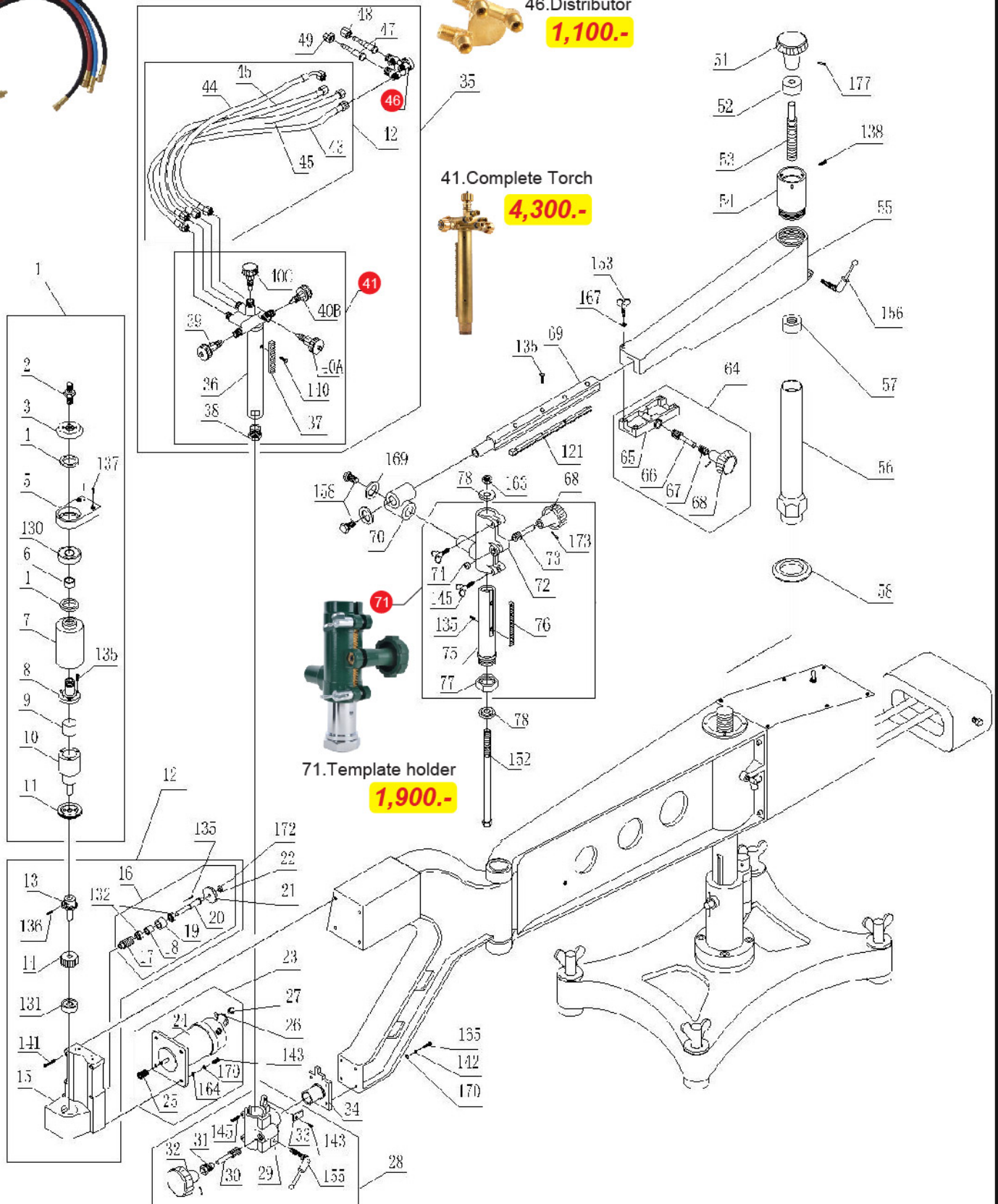
41.Complete Torch

4,300.-



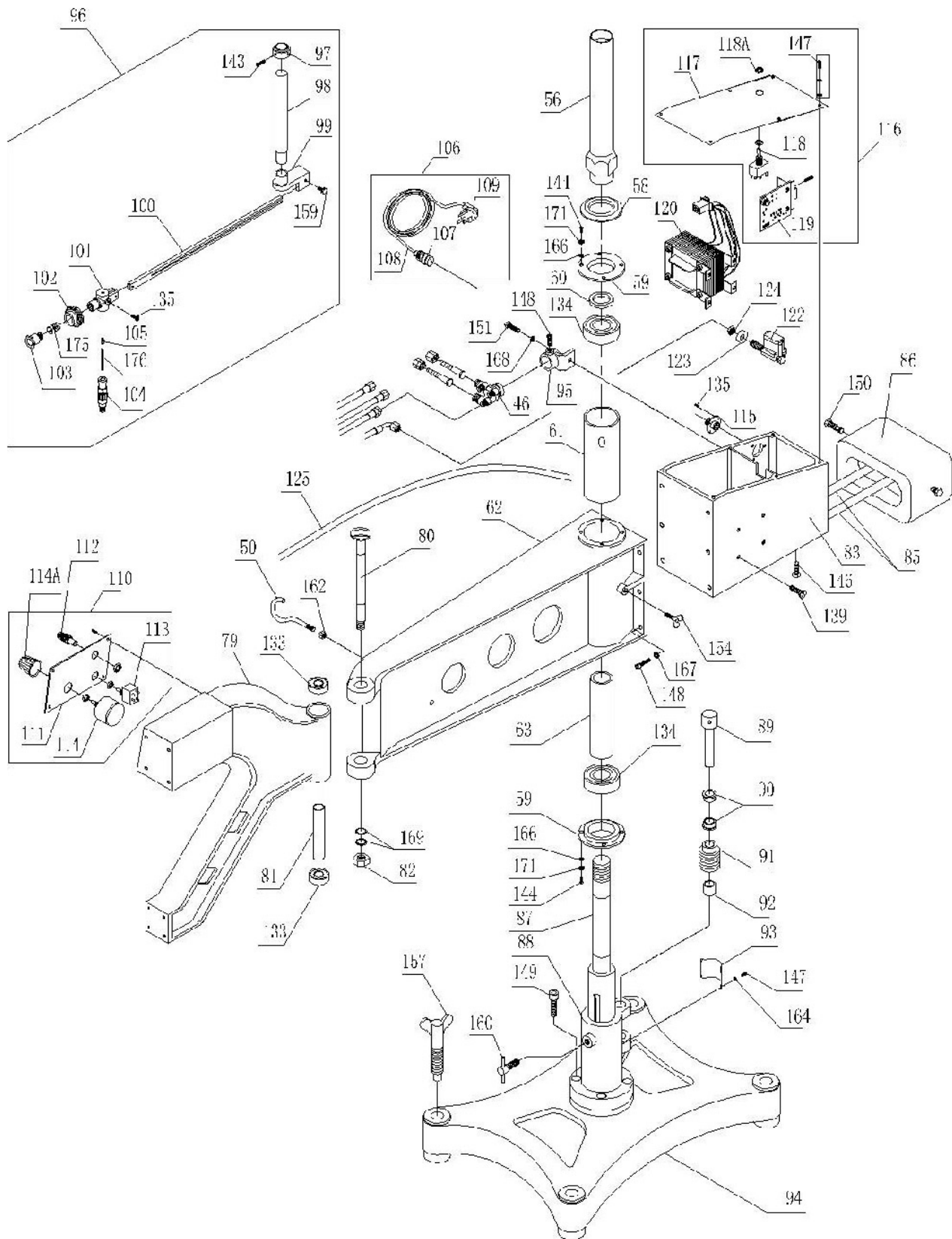
71.Template holder

1,900.-



CG2-150

parts drawing (2)



CG2-150

Parts List for proling gas cutting machine MODEL GC2-150 SERIES

	Part Name	Qty	Price
001	Template guide assembly	1	
002	Magnetic roller	1	400.-
003	Seat cover	1	
004	Wool collar	2	
005	Stopper	1	
006	Copper collar	1	
007	Sleeve	1	
008	Top retainer for Magnetic seat	1	
009	Magnetic block	1	
010	Magnetic seat	1	
011	Down retainer For Magnetic seat	1	
012	Reduction assembly	1	
013	Worm wheel shaft	1	
014	Copper worm wheel	1	
015	Reduction base	1	
016	Worm shaft Assembly	1	
017	Worm	1	
018	Mini collar	1	
019	Big collar	1	
020	Worm shaft	1	
021	Bevel pinion	1	
022	Washer	1	
023	DC motor assembly	1	
024	Motor	1	
025	Motor pinion(disk)	1	
026	Carbon brush	1	
027	Carbon cap	1	
028	Torch holder assembly	1	
029	Torch holder	1	
030	Pinion	1	
031	Pinion metal	1	
032	Handle	1	
033	Block	1	
034	Holder connection	1	
035	Torch assembly	1	

Item No.	Part Name	Qty	Price
045	Hose for gas	1	
046	Distributor	1	1,100.-
047	Hose connection	2	260.-
048	Nut for oxygen	1	120.-
049	Nut for gas	1	120.-
050	Hose hanger	1	
051	Handle for vertical adjusting	1	
052	Collar	1	
053	Screw	1	
054	Arm connection	1	
055	Template support arm	1	
056	Upper main shaft	1	
057	Nut	1	
058	Nut	1	
059	Bearing retainer 6206	2	
060	Fixing collar	1	
061	Bearing outer sleeve	1	
062	Base arm	1	
063	Bearing inner sleeve	1	
064	Cross adjusting handle assembly	1	
065	Handle base	1	
066	Handle shaft	1	
067	Collar	1	
068	Mini handle	1	
069	Cross feed gauge	1	
070	connection	1	
071	Template supporter assembly	1	
072	Template base	1	
073	Pinion shaft	1	
074	Washer	1	
075	Template case	1	
076	Rack	1	
077	Nut	1	
078	Template washer	2	
079	Main bracket	1	

CG2-150

036	Torch body	1	
037	Rack for torch	1	135.-
038	Tip fixing nut	1	
039	Valve for gas	1	
040A	Valve for pressure switch	1	
040B	Valve for cutting oxygen	1	
040C	Valve for preheat oxygen	1	
041	Complete torch (10C,36,37,38,39,40B)	1	4,300.-
042	Hose set	1	
043	Hose for oxygen	2	
044	Hose for pressure switch	1	

080	Bracket fixing shaft	1	
081	Shaft sleeve	1	
082	Fixing nut	1	
083	Electric control case	1	
084	Service tools cabin lid	1	
085	Balance bar	2	
086	Balance weight	1	
087	Body main shaft	1	
088	Main body base	1	
089	Lift worm shaft	1	
090	upper retainer	2	

Parts List for profiling gas cutting machine MODEL GC2-150 SERIES

Item No.	Part Name	Qty	Price
091	Lift worm	1	
092	Lower retainer	1	
093	Worm cover	1	
094	Stabilizer base	1	
095	Distributor assembly	1	
096	Circular cutting assembly	1	
097	Locator ring	1	
098	Gauge shaft	1	
099	Gauge supporter	1	
100	Gauge	1	
101	Pole	1	
102	Friction wheel	1	
103	Cap	1	
104	Friction wheel shaft	1	
105	bead	1	
106	Power cord assembly	1	
107	Metal plug to machine	1	
108	Cabtyre cord	1	
109	Rubber plug to power source	1	
110	Speed control assembly	1	
111	Control pannel	1	
112	Power LED	1	
113	Forward /Reverse switch	1	
114	Condenser	1	
115	Metal Socket	1	
116	Electric control box assembly	1	
117	Panel	1	

Item No.	Part Name	Qty	Price
137	Plain screw M4×16	2	
138	Plain screw M4×6	3	
139	Plain screw M5×10	2	
140	Cap screw M3×8	6	
141	Cap screw M4×28	4	
142	Cap screw M4×15	4	
143	Cap screw M4×12	14	
144	Cap screw M5×12	8	
145	Cap screw M5×25	4	
146	Cap screw M6×20	7	
147	Half round head screw	18	
148	Inner hexagon screw M6×20	6	
149	Inner hexagon screw M10×25	4	
150	External hexagon screw M10×40	2	
151	External hexagon screw M8×30	2	
152	External hexagon screw M10×180	1	
153	Wing bolt M6×40	1	
154	Wing bolt M8×40	1	
155	Crank handle M8×25	1	
156	Crank handle M8×40	1	
157	Wing bolt M20×85	4	
158	Round head screw M10×15	4	
159	T bolt M8×40	1	
160	Locking screw M10×30	1	
161	Hexagon nut M3	4	
162	Hexagon nut M8	1	
163	Hexagon nut M10	1	

CG2-150

118	Power switch	1	
119	Circuit board	1	
120	Transformer	1	
121	Cross feed gauge rack	1	
122	Pressure switch	1	
123	Pressure switch label	1	
124	Pressure switch locking nut	1	
125	Motor cord	1	
Standard fittings list			
130	Bearing 16004	1	
131	Bearing 6200	1	
132	Bearing 6800	2	
133	Bearing 6202	2	
134	Bearing 6206	2	
135	Plain screw M3×8	10	
136	Plain screw M3×12	4	

164	Washer Ø3	4	
165	Washer Ø4	22	
166	Washer Ø5	8	
167	Washer Ø6	6	
168	Washer Ø8	2	
169	Washer Ø10	2	
170	Spring washer Ø4	22	
171	Spring washer Ø5	8	
172	Rivet Ø2×8	2	
173	Spring Pin Ø2.5×18	6	
174	Cone pin Ø4	2	
175	Spring 22×1×25	1	
176	Spring 6.5×5×35	1	
177	Spring pin	1	



KC-54D

**PROFILE
GAS
CUTTER**



**SUMO[®]
INDUSTRIAL**

**เครื่องตัดแก๊สตามแบบ
PROFILE GAS CUTTER**

KC-54D



เครื่องตัดแก๊สตามแบบ

KC-54D PROFILE GAS CUTTER

Outside Profiling Cutting Machine

The KC-54D is a quality constructed, hard-working gas shape cutter for high production accuracy. Compact and simple to operate, this fine machine is most at home doing highly repetitive work where it can continuously produce the same precision flame cuts by following a steel template. A powerful magnet roller smoothly guides the cutting torch around any shape, cutting steel plate up to 4" thickness.

Weighing at only 33 kg, it can be carried anywhere, and its versatility of performance meets your exact cutting needs. It offers all the convenient features of more expensive machines with no sacrifice in operational ease and dependability and promises to be an efficient time and labor saving addition to your working inventory.

QUALITY CONSTRUCTION

The KC-54D is ruggedly constructed in three main sections: the body, the template-fitting arm assembly and the stand. The body consists of the pantograph, jaw, magnetic tracing system mounted securely on the upper jaw and an exclusive cutting torch mounted to the lower jaw. Control functions are conveniently concentrated on the jaw side.

The torch can be swiveled up for easy replacement of the tip and maintenance. The 25/64-inch diameter (10mm) standard magnetic roller follows the shape of the steel template fixed to the template holder and accurately guides the cutting torch. Besides the standard roller, optional rollers of various diameters (8,12,and 20mm) are available for use with this machine. A change of rollers permits cuts of different size with the same template.



78,000.-

Note: Shown is the type with electromagnetic control tracer.
Standard configuration is with permanent magnet tracer.

Main configuration



- 1.Arm
- 2.Template holder
- 3.Template
- 4.Magnet head
- 5.Magnet roller
- 6.Motor
- 7.Speed control dial
- 8.Power switch
- 9.Auto switch(Off-On)
- 10.Torch

Features & benefits

CONVENIENCE-An automatic switch permits simultaneous actuation of the cutting oxygen and the motor. The adjustment and control functions are conveniently, located on the jaw, and all operations have been simplified for labor saving and dependability.

Easy vertical and horizontal adjustment of the template holder facilitates centering and flange cutting.

ACCURACY-An extremely powerful permanent magnetic roller ensures precision conformity to complicated template shape by preventing slippage during the operation. A S.C.R. control system is employed in this machine so that cutting speed is highly stable.

CAPABILITY-Effective cutting range is greatly extended. In circle cutting, the maximum diameter is 700mm by using the appropriate attachment, cutting circle diameter is extended up to 1,700mm. The cutting speed also ranges widely from 100 to 1,000mm/min (3-15/16 to 39-13/32 in/min) and the optimum speed for the thickness of the plate being cut is easily obtainable.

Automatic circle cutting attachment W/ motor

Part No. KC-P24 optional

The unit is specially set for KC-54D to make a circle cut (range Dia. 60-750mm)without a template.

Technical specification

Rectangle cutting area	450x1840 mm.
Square cutting area	1340x1340 mm.
Circle cutting area	3-750 mm.
Max. cutting length	1840 mm.
Max. cutting thickness	3-100 mm.
Cutting speed	50-850 mm/min
Torch	Injection type
Control	S.C.R.control
Net weight/Gross weight	46/71 kgs.
Dimensions (mm)	920x450x750

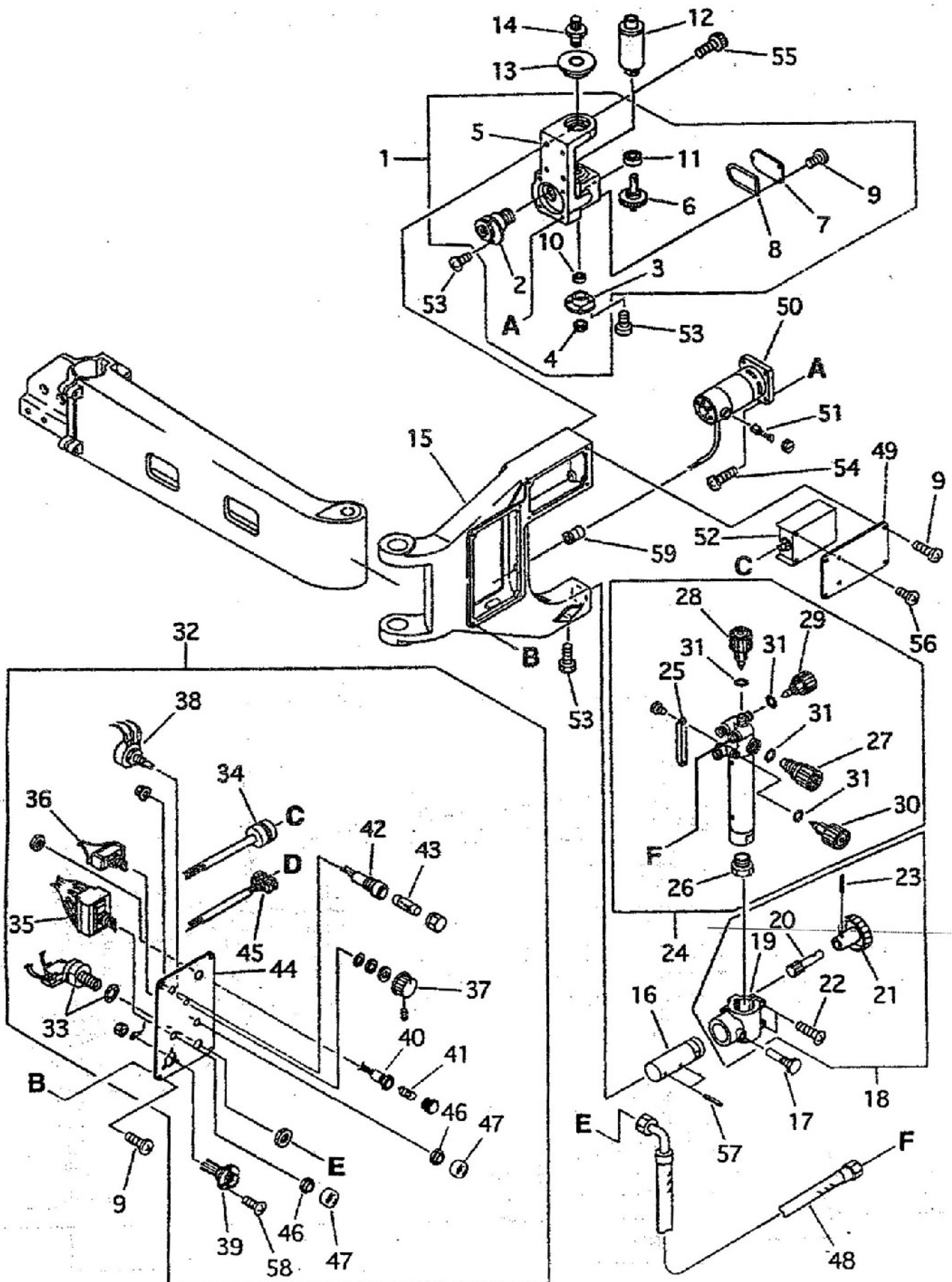


- 1.Motor
- 2.Template connection
- 3.Speed reduction unit
- 4.Rotator
- 5.Slide bar (Graduated)
- 6.Rotator holder

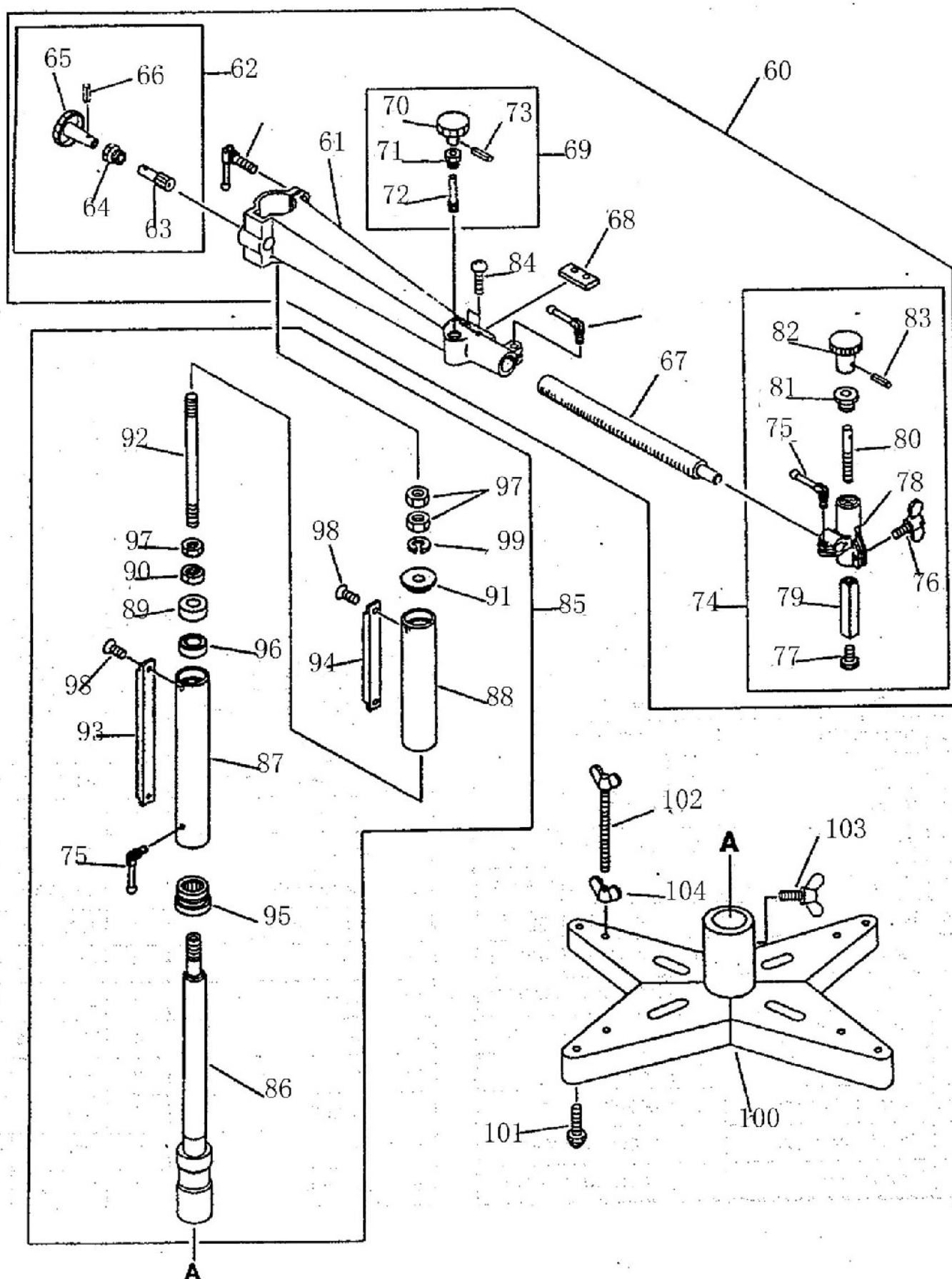


- 7.Rotation spindle
- 8.Electromagnetism control switch (Optional)
- 9.Circle diameter adjustment handle
- 10.Circle cutting socket

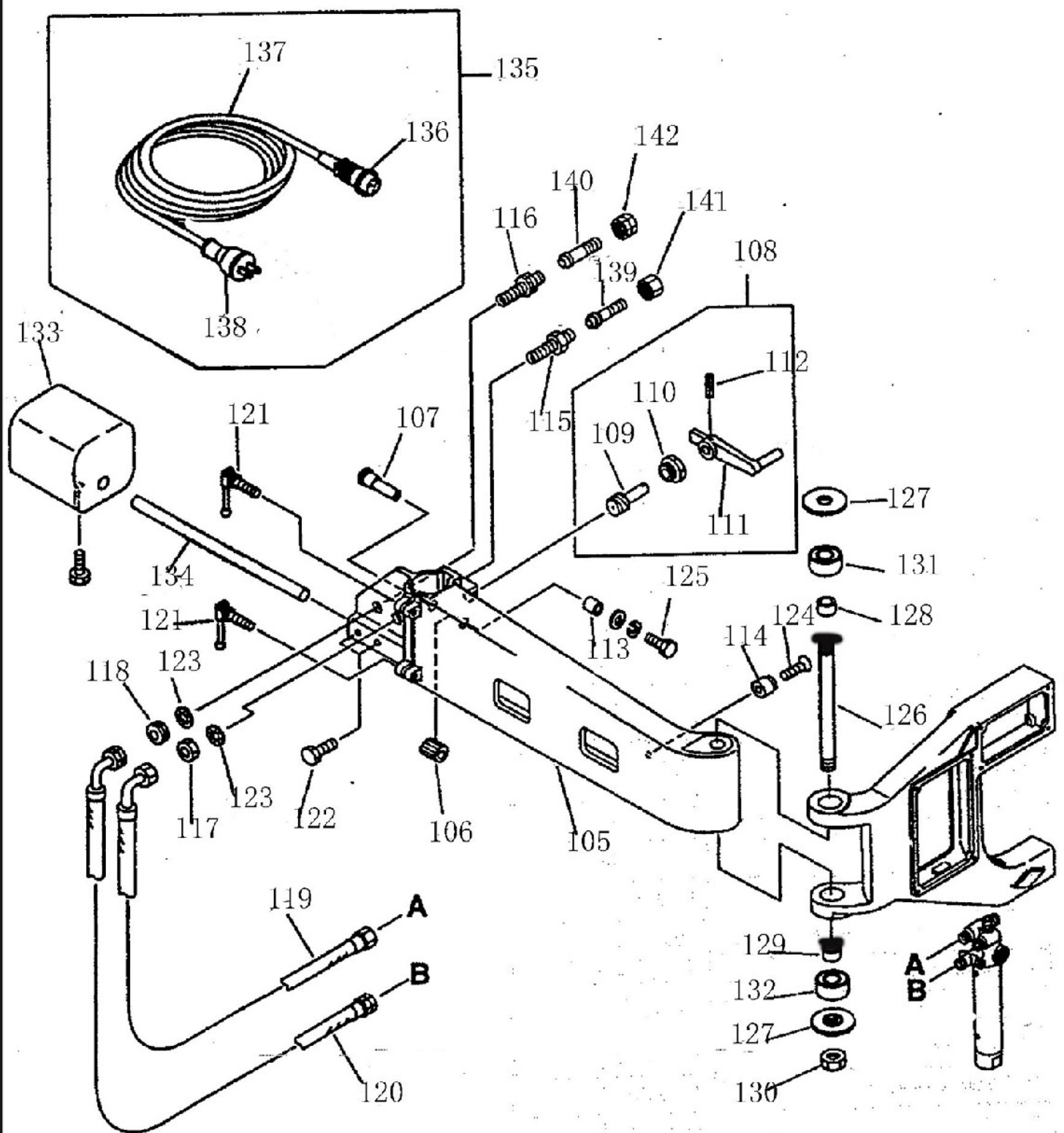
KC-54D



KC-54D



KC-54D



MEGAPIPE

PIPE
SERIES



Macaw

com • export@gazcut.com
8067971 • FAX: 0086-574-88067127



SUMO[®]
INDUSTRIAL

เครื่องตัดท่อแม่เหล็ก
Magnetic Pipe Cutting Machine

MEGAPIPE



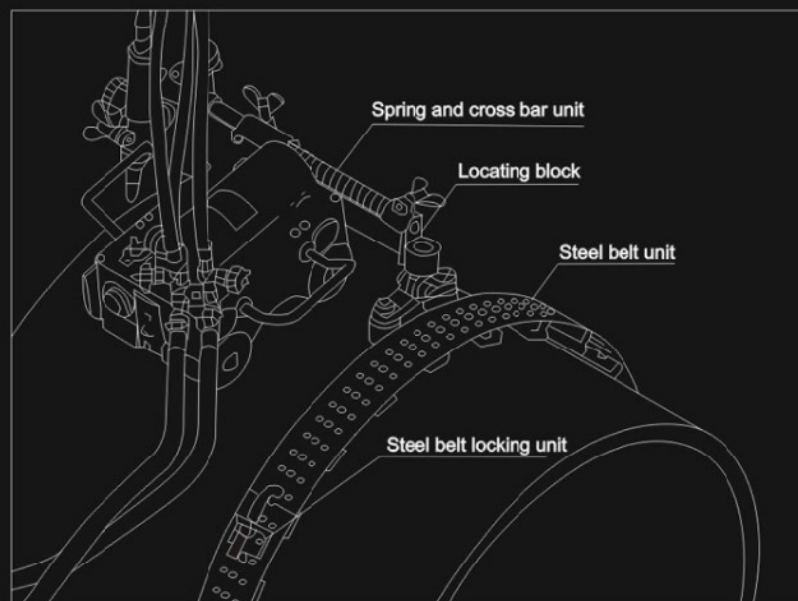
MAGAPIPE Macaw

Magnetic Pipe Cutting Machine

There are two sets magnetic rollers built inside the machine body to keep the machine crawl on the pipe when cutting is operated. It can be used for parallel, vertical and face-down cutting. The machine features compact structure, stable running and easy operation. Optional steel belt assembly can be used to cut the big size pipe (Over ϕ 600mm) to assure the cutting accuracy.

The Machine body is made of aluminum alloy to make the machine light and durable. The magnetic absorability force is over 50kg and assures the machine attached to the pipe firmly. Bevel angle I,Y,V(45°).

Optional steel belt installation



The steel belt assembly is used for large pipe to assure cutting accuracy (To make the starting point meets the end point). The belt assembly adopts an elastic unit which always to keep the torch align with the belt even the machine affects a slight offsetting.(As shown in the diagram)

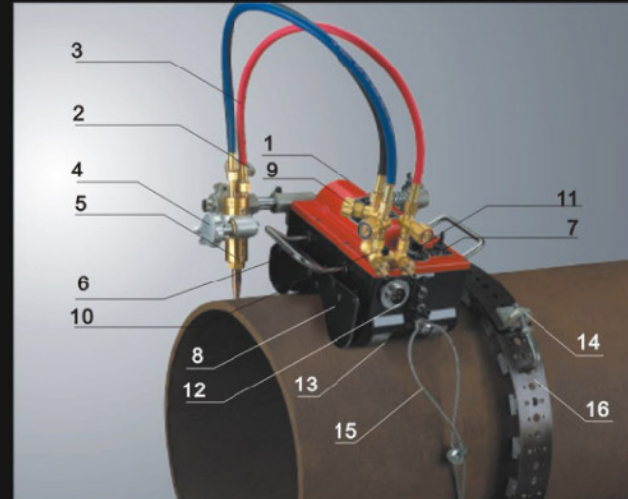
Note: The belt assembly is an optional. customers may order according to the pipe diameter.

Technical specification

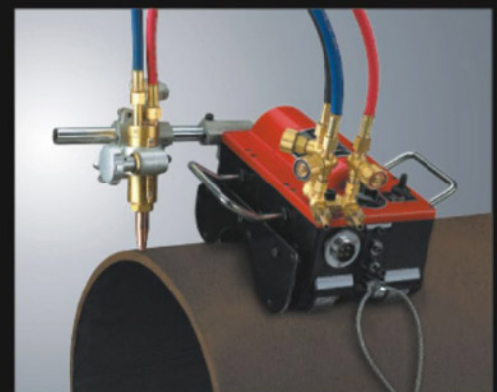
Effective pipe diameter	108-600mm (Standard) Bigger size with belt (Optional)
Pipe Thickness (mm)	5 -50
Drive	AC/DC Geared motor
Torch	Injector Type to suit acetylene
Cutting speed (mm)	5-780
Gross weight (kg)	20
Dimensions (mm)	350 x 310 x 280

60,000.-

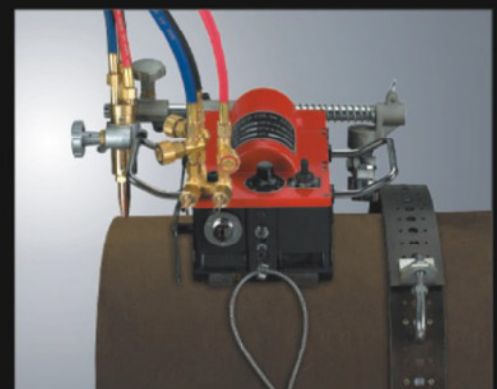
Main configuration



- | | | |
|------------------------|--------------------------|----------------------|
| 1.Main unit | 7.Forward/Reverse switch | 12.Power socket |
| 2.Cross feed handwheel | 8.Heat shield plate | 13.Magnet wheel |
| 3.Hose | 9.Valves | 14.Control belt hook |
| 4.Torch holder | 10.Distributor | 15.Safety ring |
| 5.Torch | 11.Speed knob | 16.Belt |
| 6.Carring handle | | |



Magapipe Standard W/o belt assembly



Magapipe-B W/ belt assembly